

# Discover Solihull Sixth Form College

[www.solihullsf.ac.uk](http://www.solihullsf.ac.uk)

General Enquiries - Tel: 0121 709 2581 - Email: [enquiries@solihullsf.ac.uk](mailto:enquiries@solihullsf.ac.uk)

Admissions Enquiries - Tel: 0121 709 2803 - Email: [admissions@solihullsf.ac.uk](mailto:admissions@solihullsf.ac.uk)

Solihull Sixth Form College - Part of the Summit Learning Trust - Widney Manor Road, Solihull, West Midlands B91 3WR



Solihull Sixth Form College, in accordance with its Mission, is fully committed to meeting the requirements of the Equality Act (2010), advancing equality of opportunity and promoting good relations by recognising and valuing diversity. Further information regarding the College's approach to Equality and Diversity and agreed Equality Objectives is on our website.

The College has a Safeguarding and Child Protection policy, including Prevent, which meets the standards of the local safeguarding board. Please contact the College if you require this information or an application form in another format (e.g. Braille, large print, spoken word, etc).

# Solihull Sixth Form College

## Discover what drives you

Prospectus for September 2020 entry

[solihullsf.ac.uk](http://solihullsf.ac.uk)

# Discover Solihull

My name is Martin Sullivan and I'm the Principal at Solihull Sixth Form College, part of the Summit Learning Trust. This prospectus is your first step towards discovering more about life in Solihull.

As a sixth form college, we have a different learning culture to what you will have been used to at school. Our ethos is not just about helping you to achieve the best grades you are capable of, it is also about developing you into an independent learner, so you are ready to face the challenges of Higher Education, further training and employment.

We are specialists in post-16 education, with teachers who are experts in their fields. We boast a large selection of A level and BTEC courses and a wide range of extra-curricular enrichment options. Every student has an academic coach, who is there to guide you in your studies and support your progression. All this takes place in a friendly multi-cultural environment with first class facilities and resources.

While you can expect the very highest standards from us as a College, we also have high expectations of you. We expect you to take responsibility for your learning. The greater commitment to your studies that you have, the greater your chance of success and the greater the sense of achievement when you reach your goals.

This learning culture is best summed up by our mission statement:

## Aspire

We **ASPIRE** to be outstanding: academically, professionally and personally.

## Invest

We **INVEST** fully in all we do, knowing that the more effort we commit, the more benefits we can access.

## Respect

We **RESPECT** each other, ourselves and our environment.



Thank you for your interest in Solihull Sixth Form College. We hope you will be inspired to find out more. Enjoy the information in this prospectus, take a look at our vibrant website ([solihullsfc.ac.uk](http://solihullsfc.ac.uk)) and visit us at one of our open events. I hope to see you soon.

*Martin Sullivan*

Dr Martin Sullivan - Principal

**98%**  
**A Level**  
Pass Rate 2019

**100%**  
**BTEC**  
Pass Rate 2019

# Discover Solihull Sixth Form College

## Join us for our open events

The best way to discover what Solihull Sixth Form College can do for you is to visit us at one of our open events. You can talk to teachers and current students, hear from the Principal and see our facilities. There are four chances to visit us:

### Open Day

Sat 10 Oct 2019  
9.30am - 3.30pm  
Last entry at 2.30pm

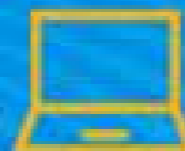
### Open Evenings

Wed 27 Nov 2019  
Mon 20 Jan 2020  
5.00 - 8.00pm  
Last entry at 7.30pm

### Spring Talks & Tours

Tue 3 Mar 2020  
5.00 - 7.00pm  
Timed slots available  
Booking essential

All prospective students must be accompanied by a parent or other adult.



Book your place on our website.  
Pre-registration opens 4 weeks before each event.  
[solihullsfc.ac.uk/applying/open-days](http://solihullsfc.ac.uk/applying/open-days)

# Our Courses

At Solihull Sixth Form College, we have more than 40 subjects for you to choose from with qualifications available at A level, BTEC Extended Diploma and CACHE Diploma. All our courses are Level 3 qualifications, which means they can all lead to Higher Education or training.

For students who choose A levels, almost any combination of subjects is possible. The majority of students choose to study three subjects at A level, which is the standard entry into university. A small number of high-achieving students may choose to study four A levels. This route requires higher achievement at GCSE and those that undertake four subjects commit to doing so for the full two years.

A levels are assessed by exams at the end of two years of study. Our teaching methods are designed to ensure students are able to recall learning from their first year,

as well as what they have been taught more recently so they are ready for these examinations.

For students that opt for BTEC study, coursework forms a significant part of the qualification, although all have some external assessments. While the teaching methods and assessment may differ from A level, BTECs provide students with qualifications at the same level as A level and are highly regarded by university, employers and training providers.

You must decide which type of qualification suits you best – A level, BTEC or CACHE.

We offer a massive range of subjects to suit all ambitions.

## A level (and A level equivalent\*) Subjects

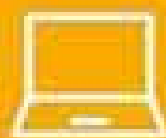
Accounting  
Ancient History  
Biology  
Business  
Chemistry  
Computer Science  
Criminology\*  
Drama  
Economics  
English Language  
English Literature  
Film Studies  
Fine Art  
French

Further Mathematics  
Geography  
Geology  
German  
Graphics  
Health & Social Care\*  
History  
Information Technology\*  
Law  
Mathematics  
Media Studies  
Music  
Philosophy  
Physical Education  
Physics  
Politics

Psychology  
Religious Studies  
Russian  
Spanish  
Sociology  
Statistics

## BTEC/CACHE Courses

BTEC Applied Science  
BTEC Art & Design  
BTEC Business  
CACHE Childcare & Education  
BTEC Health & Social Care  
BTEC IT  
BTEC Sport



Visit our website to find out more about what is taught on each course at: [solihull.ac.uk/courses](http://solihull.ac.uk/courses)

# Entry Requirements

We have entry requirements for all our courses. They exist to ensure that all our students can cope with the demands of advanced level study.

We believe that if you achieve the grades detailed on the next page, you can start your courses at the College with confidence. We know that the better you do at GCSE, the better your chances of success with us, so you must aim for as many strong passes as possible to get yourself the best chance of success at A level or BTEC.

For entry in September 2020, there are three possible programmes of study open to you, all with slightly different entry requirements. Please note, individual courses may also have subject-specific grade requirements, so it is important you read up on the courses you want to study so you know what grades you are aiming for.

## The choice is yours

- 1** 3 A level Standard Programme
- 2** 4 A level Programme
- 3** 1 BTEC Extended Diploma or CACHE Diploma

### Standard 3 A level Programme:

The majority of our students will choose to study 3 A level subjects and will commit to these subjects for the full two years. Entry requirements for this programme are:

- At least two grade 5s at GCSE.
- At least a further three grade 4s at GCSE.
- You should have at least grade 4 in BOTH GCSE English Language AND Mathematics.

Please note that there may be additional entry requirements specific to particular subjects – please check each subject listing on our website carefully to ensure you understand these entry requirements.

### 4 A level Programme:

Some very able students may choose to study 4 A level subjects. These students must commit to these four subjects for the full 2 years. This will include most students who choose to study A level Further Mathematics, who will pick Mathematics, Further Mathematics and two other subjects. Entry requirements for this programme are:

- At least five grade 7s at GCSE.
- You should have at least grade 6 in GCSE English Language AND Mathematics.
- Check each subject listing on our website for any subject-specific grade requirements.

### BTEC Extended Diploma or CACHE Diploma:

BTEC Extended Diploma and CACHE Diploma courses are equivalent to studying 3 A levels, so have similar entry requirements to A levels. The only difference is that other courses equivalent to GCSE (e.g. BTEC First Diploma and OCR Nationals) count towards entry requirements for BTEC/CACHE. You need:

- At least two grade 5s at GCSE or merits on an equivalent course.
- At least a further three grade 4s at GCSE or equivalent, including at least grade 4 in GCSE English Language or Mathematics, with at least grade 3 in the other one. Students who have a grade 3 in one of these two key subjects will be required to retake the GCSE in addition to the BTEC Extended Diploma.
- Some BTEC courses have specific entry requirements. Science requires a minimum grade 4 in Maths and two grade 4s in GCSE Science; IT requires a minimum grade 4 in Maths and IT/Computer Science; Art & Design requires a minimum grade 4 in an Arts-based GCSE.
- The CACHE Level 3 Childcare Diploma requires BOTH English Language AND Maths at grade 4 or above. CACHE students wishing to move into Primary Teaching in the future also require at least grade 4 in Science.

# How to Apply

## Step One

Apply online via our bespoke information portal Tyber. You will be asked to set up an account first, which means you can log in at any time and check the status of your application. Please ensure you check this and your email regularly, as this is how we will communicate with you.

## Step Two

We will send you confirmation that your application has been received within two weeks.

## Step Three

We will contact your school for a reference.

## Step Four

If your application indicates you will meet our entry criteria, we will email you to invite you to an interview. At the interview we will discuss your application and your subject choices. Interviews are allocated on a 'first come first served' basis, so please do not worry if there is a delay in arranging your appointment. Missed interviews are not routinely rescheduled unless students get in touch to explain their absence and re-arrange it.

## Step Five

All being well, we will make you a written offer of a place at the College at interview. You then need to confirm acceptance of the offer, which you can do by logging into your account on Tyber.



Visit our website to find out more about applying:  
[solihullsf.ac.uk/applying/step-by-step](https://solihullsf.ac.uk/applying/step-by-step)



# Discover What Our Students Think...



*Louise Rippin*

- Former Light Hall School student
- Achieved all A\* grades at A level
- Progressed to the University of Birmingham to study Mathematics



*The best thing about the College was being part of a supportive environment, where everyone is focussed, helps each other and you are encouraged to succeed as individuals. The support from staff within college and the many online resources available have really helped not only for academic work but also for university applications.*



*Ravi Jethwa*

- Former Ninestiles Academy student
- Achieved all A and B grades at A level
- Progressed to Aston University to study Accounting



*I loved the freedom that College gave me, which prepared me for University by making me more independent. I had some fantastic teachers, who pushed me all the way. I saw their dedication to the subject, but also to me. I also loved my mentor, who helped me with any problem I had.*

## Your Interview

### Why do we invite you for interview?

We want to give you the best advice we can. That means finding out a bit about you, what your interests are, what career ambitions you might have, and what level you are currently working at.

### What happens at the interview?

We will invite you (by email) to come into College for an interview. Your interview will last around 15 minutes. You are welcome to bring a parent/guardian along, but please be aware we only have a limited waiting area. Dress Code is smart casual and most students wear school uniform. You will be given a date and time to attend. Please stick to that time if you can or let us know if it is a problem so we can rearrange it for you.

Please don't be nervous; the interview is nothing to worry about. Your interviewer will be a teacher or a member of support staff. You will find them to be friendly and easy to talk to and very knowledgeable. They just want to give you the best advice they can. They will talk through your subject choices and your plans for the future and explain the entry requirements to you. All being well, we hope to be able to make you an offer there and then and you will leave with that offer letter.

You will have the chance to ask any questions you might have. Please speak up if you are confused about anything or are worried about any part of the application process.

### When will your interview take place?

Most interviews take place at College between the hours of 5.00 – 7.00pm. We have some daytime appointments too. You will be scheduled an appointment based on a first come, first served basis and you will be at no disadvantage if you are interviewed later in the year.

### Questions?

Email: [admissions@solihullsf.ac.uk](mailto:admissions@solihullsf.ac.uk)

or call 0121 709 7803



# 7 steps to becoming a student at Solihull Sixth Form College

## Step One

Attend an Open Event - we will be opening our doors on Saturday 19 October 2019 and Wednesday 27 November 2019 for your chance to meet our teachers and current students and find out about our courses.

## Step Two

Look out for Taster sessions - some subjects hold twilight taster sessions in the autumn (typically in November). These are usually hour-long sessions after school to show you what the subject is like. Try a new course before you apply.

## Step Three

Make your application - in mid-October we will start accepting online applications via Tyber. Ensure you complete your application before 31 March 2020 and include all your predicted grades, as well as the courses you are applying for. You will be interviewed on a first come, first served basis.

## Step Four

If you missed our Autumn open days - why not book your place on our Open Evening on Monday 20 January 2020 or a Spring Talk & Tour on Tuesday 3 March 2020. This is your last opportunity to find out more about the College before the application deadline.

## Step Five

Attend Welcome to College Day - this event is a taster day to give you the opportunity to see what College life is like and what studying your chosen courses will be like. It will take place on either Wednesday 24 or Thursday 25 June 2020 and we will let you know which date you should attend when we send out invitations.

## Step Six

Enrol - after you have received your GCSE results, it is time to officially become part of the College community. We will write to you over the summer to give you a specific date and time for this to take place. It will be between 26 - 28 August 2020.

## Step Seven

Induction - after enrolment, all new students must attend a half-day induction session. This will take place on either 3 or 4 September 2020. Your enrolment at the College is dependent on your presence at this induction and your full attendance for the first full week of teaching. Lessons will start the week after induction.

# Welcome to College Day

Make sure you have picked the right courses for you

## Get a taste of college life

Look out for the invitation this Spring and make sure you RSVP

**Wednesday 24  
& Thursday 25  
June 2020**

This all-day event is strictly by invitation only. Only students who have completed an application and been made an offer will be invited to attend. Students will be required to attend on one (but not both) days for taster sessions in all the subjects you hold an offer.

# Enriching your Experience

## What is enrichment and why is it important?

Enrichment is an activity that you can take part in alongside your studies. It should be enjoyable, bring you into contact with new people who have similar interests to you and enhance your College experience. It can also help you stand out from the crowd when you apply to university or for jobs, as it helps to develop skills like teamwork, leadership and communication.

Some of our enrichments are geared towards a particular course or career and we call these our Specialist Academies. If you are aiming for a career as a doctor for example or are serious about studying subjects like English, Psychology, a Social Science, a Humanities subject or a Visual Arts course at university, please give serious consideration to one of these options:

- Pre-Medical School
- Shakespeare Academy
- Psychology Research School
- Humanities Academy
- Social Sciences Academy
- Visual Arts Academy

There is no need to apply for enrichments yet – after you get your place at the College we will give you more information on how you can participate.

The Extended Project Qualification (EPQ) is another popular enrichment option. This is a piece of private research of your choice, which is marked like half an A level and can boost your university application. Students who choose to undertake an EPQ will be supported by a member of staff and typically get very high grades.

There are other enrichment options open to students that are less academic and more creative and these are just as worthwhile. They include:

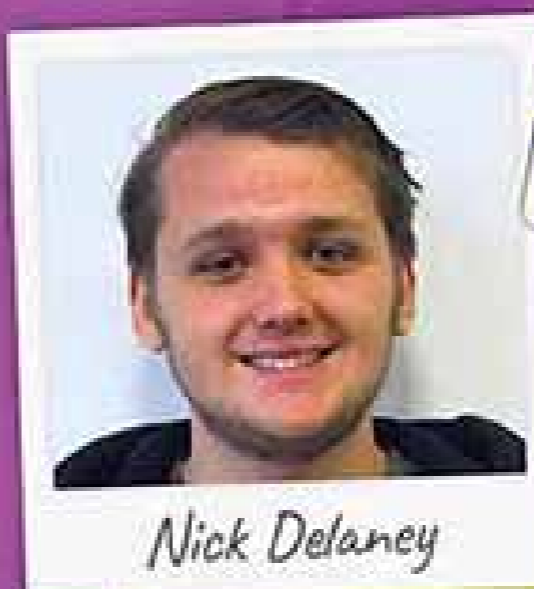
- Team Gambia
- Musical Activities
- Solihull Theatre-In-Education Company
- Sports teams (football, rugby, netball, basketball & cricket)
- Level 2 Award in Sports Leadership
- ABC Beginners' Spanish
- Creative Writing
- Core Maths
- Volunteering
- Student Council
- Health Ambassadors Scheme
- Charity Ambassadors Scheme
- Student Societies



# Stretch & Challenge

The College offers a Stretch & Challenge Programme to provide extensive support and guidance for students applying to Russell Group universities, including both Oxford and Cambridge. This includes:

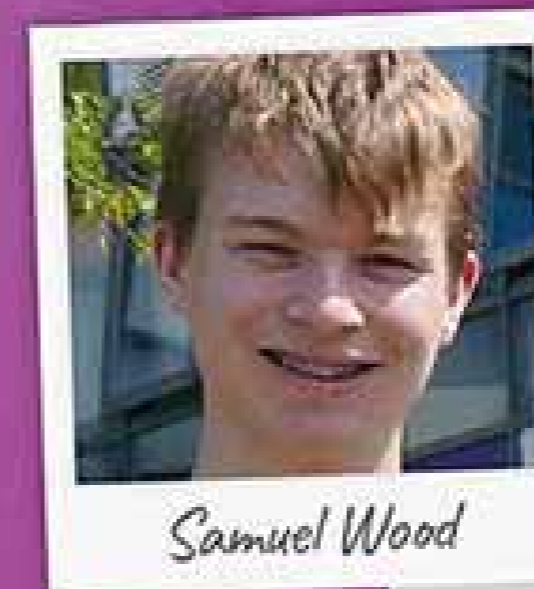
- Preparation for university tests and interviews
- Support with personal statements
- A place on the Stretch & Challenge Summer School in June
- Extension work opportunities
- Access to a virtual learning area with links, activities and aptitude tests which will strengthen applications to university
- A specific programme for those students considering applying to Oxford or Cambridge



Nick Delaney

- Former Lode Heath School student
- Achieved all A\* grades at A level
- Progressed to Churchill College at the University of Cambridge to study Asian & Middle Eastern Studies

“ Making an application to Cambridge was intense. However, I visited the university and I had two mock interviews at College to prepare me, including one on the plane with my teacher on the way back from my German exchange. You can never prepare for everything they will ask you, but that preparation was really helpful.



Samuel Wood

- Former Light Hall School student
- Achieved all A and A\* grades at A level
- Progressed to the University of Nottingham to study Chemistry with Molecular Physics

“ There were so many good things about my time at the College, including how fantastically knowledgeable my teachers were and how giving of their time. The independence of College helped me focus, and having the teachers willing to answer any questions throughout early in the morning or after College helped too.



Kyaice Hendricks

- Former Light Hall School student
- Achieved all A and A\* grades at A level
- Progressed to Mansfield College at the University of Oxford to study English Literature & Language

“ The best thing about studying at this College was the independence that I got in my studies. I felt more prepared for university as a result of working independently in all of my subjects. It allowed me to see what I was capable of on my own.

# Bright Prospects, Bright Futures

The College provides excellent information, advice and guidance to young people from their first point of contact with us as they explore their post 16 study options right through to the completion of their studies and their future career paths.

There is a comprehensive careers and employability programme, which is evaluated in a variety of ways, including feedback from students and parents/carers. We are proud to have achieved the Career Mark accreditation – the nationally recognised award assuring that quality careers advice, information and guidance is available to our students.

Our annual Higher Education & Higher Apprenticeship Fair is one of the largest of its kind in the country. Over 80 universities, Gap Year organisations, employers and apprenticeship providers are represented.

You will benefit from the expertise of a dedicated careers and employability team with a qualified and experienced careers adviser and employability adviser. The services they offer include:



1-to-1 advice and guidance



CV support



Links with employers and universities



University applications support



Specialist workshops



Work placement support



I went to quite a few talks and lectures about making an Oxbridge application which the Careers Advisor helped to organise. I also got a lot of support with my personal statement which helped in understanding the kind of things that Oxford were looking for in an application.

Former student Pete Miller



I got the opportunity to go on a placement with my BTEC Health & Social Care course, which gave me the chance to find out which career I wanted to go into.

Former student Ellie Roberts



When it came to applying to Cambridge I just thought I may as well, because what did I have to lose. I never really thought it would happen, but the College was really supportive. My French and German teachers were really pushing me, saying 'You can do this' and that drove me on. The College also arranged a mock interview for me which was really useful.

Former student Megan Bache

# Supporting your Learning

Pastoral support is provided to students from a variety of dedicated staff:

## Dyslexia, Disability and Individual Needs

The College is committed to ensuring that students with specific learning difficulties, disability or other additional needs are treated fairly, and all reasonable adjustments to provision are made to allow them to reach their full potential. Our Additional Learning Support Team offers flexible support tailored to the individual student's particular needs.

## Student Development Officers

This team fulfils a number of pastoral support services, including student welfare, counselling, support for student societies and fundraising, management of the Student Health Ambassador scheme and liaison with the Student Council. They are helpful, friendly and approachable.

## Financial advice

Staff are available to advise students on the financial help that is available, which includes bursaries and the Free Meals scheme.



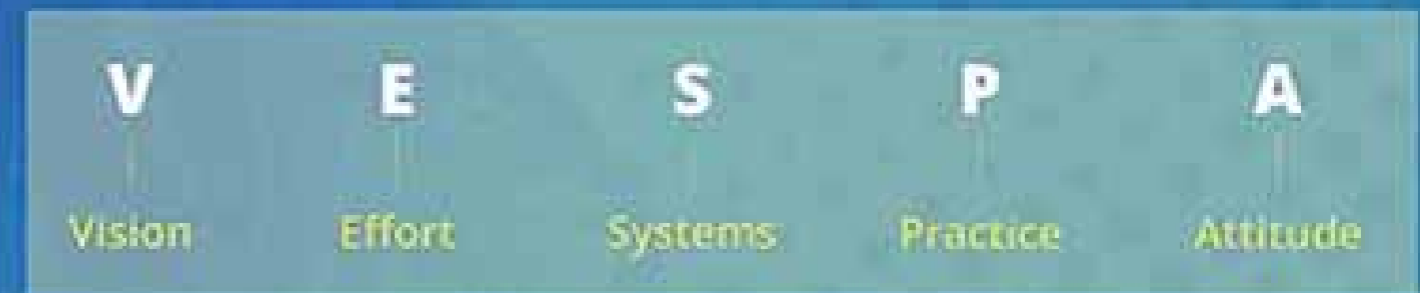
I enjoyed completing the College Colours award, which rewards you for the effort you put in and gives you brand new experiences. It also helped me with my Aspergers and ADHD, because it challenged me to face something I wouldn't normally do and helped to build my confidence within the College community and in outside life.

Former student Jessica Smith

## Academic Coaching

Every student is allocated an academic coach. They will guide you in your studies, help you with your university application or your application for higher apprenticeships or jobs and will be available for advice and support.

You will get 1-to-1 guidance from your academic coach and also attend weekly academic coaching seminars. Through these seminars you will be introduced to the VESPA mindset, which is a proven strategy for ensuring students achieve to their potential. VESPA stands for:



# Celebrating Success

Strive for academic excellence. Hard work, coupled with the excellent teaching we can provide, can see you achieving success like our students did in 2019. Our results included:

- 568 starred grades (A\* at A level/CACHE and Distinction\* at BTEC)
- 98% pass rate at A level
- 100% pass rate in BTEC/CACHE
- 70% A\*-C grades at A level
- 19 A level subjects with 100% pass rates
- 89% high grades in BTEC (DDM+) and 100% in CACHE
- 100% pass rate and 93% A\*-C in the Extended Project Qualification (EPQ)
- Outstanding progression to University, Apprenticeships and Employment
- 100+ students have progressed to Oxbridge and Medical degrees in the last 10 years

## Ofsted says:

“Students feel safe and their safety is a high priority for the college. Senior managers’ highly effective approach to keeping students safe has created a secure and harmonious learning environment.”

“Leaders have developed effective partnerships with local schools and universities, which have led to students progressing well to university.”

“Students are well behaved, friendly and arrive in class ready to learn. They display a strong work ethic inside the classroom.”

# Progression

Our aim is to help students achieve positive destinations after they complete their studies with us. Most choose university and the 88.4% acceptance rate in 2018 is well above the UCAS national figures for all applicants.

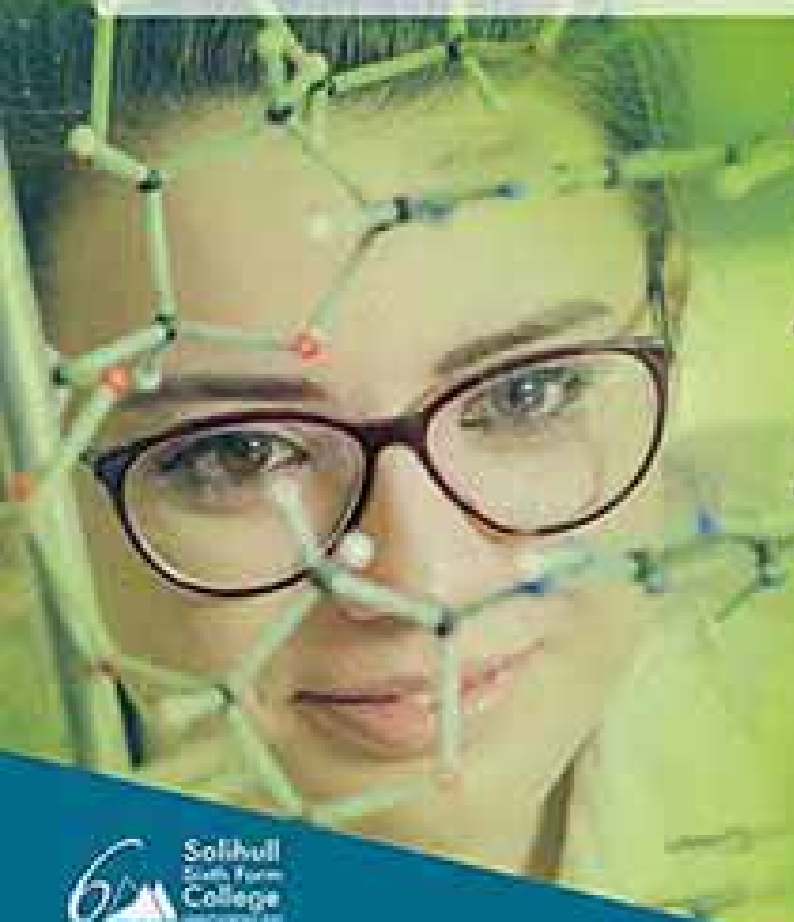
A significant number of these students are progressing onto Russell Group universities, including Oxford and Cambridge. Since 2014, 807 students have progressed to Russell Group universities, which equates to more than 20% of all our university-bound students. We are proud of our students’ achievements and of the support our staff provide to help facilitate that.

Not all students want to progress to University and we do have a significant number who choose to go straight into the world of work or to do an apprenticeship. They too will receive comprehensive advice and guidance to support their progression.

## Destinations in 2018

Higher Education - 70%	Apprenticeship - 3%
Paid Employment - 8%	Other - 3%
Gap Year before HE - 5%	Not recorded - 11%

Among the apprenticeship destinations of our students are KPMG, PwC, Hampton Homes and Paragon. We also have students who progress to the Army, Navy and Royal Marines.



# Case Studies



Emily Cremins

- Former Swanshurst School student
- Achieved all A and A\* grades at A level
- Took a Gap year and travelled to China with the TEFL Academy to teach children English before progressing to university

“The best thing about being at this College was the independence I got, as well as meeting new people. The support and incredible teaching I received helped me to achieve the results I did.”



Zair Afzal

- Former King Edwards Aston School student
- Achieved a Triple Distinction\* grade at BTEC
- Progressed to the University of Nottingham via the PwC Flying Start programme to study Accountancy

“The best thing about this college would have to be the Careers Fair, this event organised by the college equipped me with the vital information regarding university courses. Furthermore raising money for charity for one of the business units enabled me to utilise my business acumen and leadership skills.”



Hamzah Mashgari

- Former Ninestiles Academy student
- Achieved Triple Distinction\* grade at BTEC
- Progressed to Sheffield Hallam University to study Radiotherapy & Oncology

“During my time at the College I made many friends. The quality of teaching and support that I received from all my teachers was excellent. What helped me most was having access to the Learning Resource Centre and the library; the resources that were available were very beneficial.”



Ellie Roberts

- Former Cockshut Hill School student
- Achieved Triple Distinction\* grade at BTEC
- Progressed to Birmingham City University to study Midwifery

“The best thing about my time at College has been the fact I got the chance to make new friends. I also got the opportunity to go on placement with my BTEC course, which gave me the chance to find out which career I wanted to go into. The teaching was amazing because the teachers were so supportive.”

# Outstanding Facilities

As well as excellent teaching, the resources we provide are what help our students to reach their potential. Among these resources is Tyber. This is our bespoke information portal, which we use for applications and enrolment.

After enrolment, you will use Tyber to keep in touch with teachers, check your timetable and monitor your progress. We encourage parents to make use of Tyber in order to keep track of their son or daughter's progress. Teachers also make use of a virtual learning area called Moodle, which provides many online resources to aid independent learning and stretch students to achieve the top grades.

Students make use of our Learning Resource Centre every week. As well as one supervised study session each week, you can book in during breaks in your timetable to complete independent study within the library or IT area. We advise students to complete at least five hours of independent study per subject per week to maximise their chances of success.

## Among the other resources you can expect are:

- A Refectory selling a range of hot and cold food
- A Coffee Bar for hot drinks and snacks
- Lecture theatres for visiting speakers from university and industry
- A Sports Hall, Fitness Suite and playing fields
- Dedicated Drama and Music studios
- Recently refurbished science laboratories
- Multi-media language labs for foreign language study
- Professional Art and Design facilities
- Subject-specific classrooms
- Specialist IT resources, tablets and industry standard software

## IMPORTANT INFORMATION:

The information in this prospectus is correct at the time of going to print. However, it is subject to change throughout the year and you are advised to check our website ([www.solihull6fc.ac.uk](http://www.solihull6fc.ac.uk)) for the most up-to-date information. All our courses are offered subject to there being sufficient numbers of applications for financial and educational viability. This cannot be confirmed prior to enrolment in August/September.



Located adjacent to picturesque parkland, Solihull Sixth Form College offers students a friendly and relaxed environment ideal for study. Situated on Widney Manor Road, we are a short walk from Solihull town centre, two railway stations and many bus services. Most students travel by public transport and information about the best bus or train to get to College is available via the Network West Midlands website ([www.networkwestmidlands.com/plan-your-journey/](http://www.networkwestmidlands.com/plan-your-journey/)). Those wishing to drive can apply for a car parking permit at a cost.

