

Health & Social Care

The first year of the course is focused on a range of topics, mainly human development and meeting individual needs.

In order for you to develop your knowledge we suggest you read, watch and listen to a range of materials to support you.

Watch YouTube:

How a baby develops during pregnancy

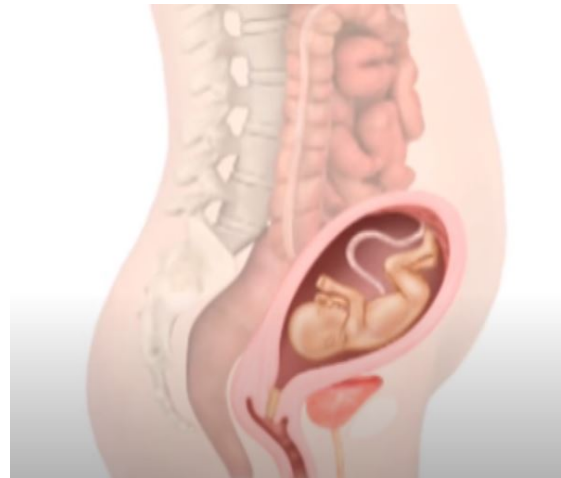
https://www.youtube.com/watch?v=h82ltr84_Yg

Bupa Health. Lifespan Development: Late Adulthood
Piaget's Theory of Cognitive Development

<https://www.youtube.com/watch?v=fPS23DlqHPU>

The Attachment Theory: How Childhood Affects Life

<https://www.youtube.com/watch?v=WjOowWxOXCg&t=33s>



Websites:

<https://www.prospects.ac.uk/> - research roles and responsibilities of the following health and social care workers: Nurse, Social Worker, Health Care Assistants, Midwives, Doctors & Youth Workers.

<https://www.nhs.uk/> - research various illnesses: cystic fibrosis, brittle bone disease, Down's syndrome, Diabetes, Osteoarthritis & Cardiovascular Disease.

Online News articles:

The Guardian:

'Health of older people suffering in poor housing, MPs warn'

<https://www.theguardian.com/society/2019/jul/03/health-of-older-people-suffering-in-poor-housing-mps-warn>

'More than 8 million people in England living in unsuitable housing'

<https://www.theguardian.com/society/2019/sep/23/people-england-living-unsuitable-housing>

BBC News:

'Housing crisis affects estimated 8.4 million in England'

<https://www.bbc.co.uk/news/uk-49787913>

'Children who sit too much 'more likely to get depressed'

<https://www.bbc.co.uk/news/education-51475399>