



**Solihull  
Sixth Form  
College**  
SUMMIT LEARNING TRUST

# Enrichment Guide 2023-24



# Enrichment at Solihull Sixth Form College

Solihull Sixth Form College offers more than just your academic studies. Our enrichments not only give you the chance to do something completely different, but also help you broaden your skills, knowledge and experience giving you the edge when applying for higher education courses, apprenticeships or employment.

Our programme is designed to enrich your studies with options suited to your interests and aspirations, whilst helping you get the most out of your time with us. We have created a dedicated enrichment slot on the timetable to allow you to participate in the programme.

So varied is our programme of enrichments that there is something for everyone to enjoy and there's a lot to be gained by adding an enrichment to your programme of study, including:

- It's fun! Many of our options allow you an opportunity to do something different once a week, getting time off from your studies to enjoy yourself.
- It helps you to make new friends, as you'll meet new people who share your interests.
- Enrichment develops valuable skills that universities, training providers and employers are looking for, including team-work, leadership and communication skills.
- Enrichment can boost your post-College progression chances - universities and employers want to see evidence of things you have done outside your studies. They will be impressed by any extra-curricular activities you can demonstrate commitment to.



# Types of Enrichment

The 40+ options you can choose from includes enrichments where you can meet students who share the same interests as you, deepen your subject knowledge, explore your interest in an area unrelated to your academic studies, achieve another qualification, participate in sport, develop a range of new skills and have fun!

This large range of opportunities will help you:

- **Connect with others** – enrichments are a great way to make new friends
- **Be physically active** – great for your mental health as well as physical health
- **Learn new skills** – give you the confidence to try new things and achieve
- **Give to others** – acts of kindness and giving to others to give you a sense of purpose and feel good!
- **Be mindful** – enjoy what is happening right now

Check out the icons we have created to demonstrate these themes.

**Enrichments that help you connect with other people**



**Enrichments that help you to be physically active**



**Enrichments that help you learn new skills**



**Enrichments that help you pay attention to the present moment (mindfulness)**



**Enrichments that allow you to give to others**



# Contents

Page	Enrichment					
6	Archaeology Academy	✓		✓		
7	Basketball	✓	✓	✓	✓	
8	Beginners Spanish	✓		✓		
9	Codebreakers Society	✓		✓		
10	Computer Programming	✓		✓		
11	Core Maths	✓		✓		
13	Creative Writing	✓		✓		
13	Cricket	✓	✓	✓	✓	
14	CSI Solihull	✓		✓		
16	Duke of Edinburgh Bronze & Silver Award	✓	✓	✓	✓	✓
17	English Academy	✓		✓		
18	Extended Project Qualification	✓		✓		
19	Football	✓	✓	✓	✓	
20	Health Ambassadors	✓		✓		✓
22	Humanities Research School	✓		✓		
23	Kitson Award	✓		✓		✓
24	Musical Activities	✓		✓	✓	
25	Netball	✓	✓	✓	✓	
26	Pre-Medical School	✓		✓		
27	Psychology Research School	✓		✓		
28	Readiness for Work in Health & Social Care	✓		✓		✓
29	Road Map to Employment	✓		✓		
30	Rugby	✓	✓	✓	✓	
31	Social Sciences Academy	✓		✓		
32	South Asian Cultural, Heritage and Language Enrichment	✓		✓		
33	Sport for Leisure	✓	✓	✓	✓	
34	Sports Leadership	✓	✓	✓	✓	✓
35	STEM Programme	✓		✓		
36	Stretch & Challenge	✓		✓		
38	Student Council	✓		✓		✓
40	Student Magazine	✓		✓		
41	Student Societies	✓		✓	✓	✓
43	Teaching Academy	✓		✓		✓
44	Team Gambia	✓	✓	✓	✓	✓
45	Theatre-in-Education Company	✓		✓	✓	
46	Ultimate Frisbee	✓	✓	✓	✓	
47	Visual Arts Academy	✓		✓	✓	
48	Volunteering	✓		✓	✓	✓
50	Young Enterprise	✓		✓		

# Introduction to the Duke of Edinburgh's Award

## What is the Duke of Edinburgh's Award?

Solihull Sixth Form College is very pleased to be offering our students the Duke of Edinburgh's Award enrichment. Created in 1956, this Award aims to improve the personal development and employability of



young people. Universities and employers also value the Duke of Edinburgh's Award and the skills that are gained. Offering individual achievements that differ from person to person depending on their goals, the Duke of Edinburgh's Award encourages young people to get involved in exciting challenges. It promotes teamwork, self-discipline, empathy and independence and is something young people remember for the rest of their lives.

## Structure of the Bronze DofE

The Bronze Duke of Edinburgh's Award programme has four sections: **Volunteering**, **Physical**, **Skills** and **Expedition**. You must do a minimum of three months activity for each of the Volunteering, Physical and Skills sections, and take part and plan an expedition.

## Structure of the Silver DofE

The Silver Duke of Edinburgh award programme can only be undertaken once students have completed the Bronze award. The Silver DofE has the same structure as the Bronze, but timescales for completion are different. **Volunteering** must be done for at least six months. **Physical** and **Skills** sections: One section for 6 months and the other section for 3 months. A three-day, two-night **Expedition** is also planned, trained for, and completed as part of the Silver award.

Examples include:

**Volunteering (V)** – you could take part in the volunteering scheme, which is lead by Tina Champion in the Student Development office. See page 48.

**Physical (P)** – this could include a team sport such as football, dance such as ballet, skateboarding or tennis.

**Skills (S)** – this section looks at developing a skill. This could include learning to drive, British Sign Language, growing vegetables, or doing an Extended Project (EPQ on page 18) - the list is endless.

**Expedition (E)** – on foot planning a guide for your local area.

There are plenty of enrichment options in this guide that you could get involved in which would count as evidence for your Duke of Edinburgh's Award programme. Check out the handy guide on the next page, which highlights which of the four sections related to the Duke of Edinburgh's Award (V, P, S or E) each enrichment could be used to demonstrate. Also see more information on page 16 about the Award Scheme.

## Choosing Your Enrichments

When deciding which enrichments you want to pursue, make sure you know how to sign up and whether it's possible to combine the enrichment with other options. Due to time commitments and timetabling, some options need to be chosen in isolation, meaning you cannot do more than one enrichment. These are highlighted with a pink cross in the second column of the table below.

Enrichment	Sign Up at Enrolment	Can Sign Up to Other Enrichments	Sign Up When Advertised	Duke of Edinburgh Award
Archaeology Academy	✓	✗		S
Basketball	✓	✗		P
Beginners Spanish	✓	✗		S
Codebreakers Society	✓	✗		S
Computer Programming	✓	✗		S
Core Maths	✓	✓		S
Creative Writing	✓	✗		S
Cricket	✓	✗		P
CSI Solihull	✓	✗		S
Duke of Edinburgh Bronze & Silver Award	✓	✓		E
English Academy	✓	✗		S
Extended Project Qualification	✓	✓		S
Football	✓	✗		P
Health Ambassadors	✓	✗		V
Humanities Research School	✓	✗		S
Kitson Award	✓	✓		V
Musical Activities	✓	✗		S
Netball	✓	✗		P
Pre-Medical School	✓	✗		S
Psychology Research School	✓	✗		S
Readiness for Work in Health & Social Care	✓	✗		S
Road Map to Employment	✗	✓	✓	S
Rugby	✓	✗		P
Social Sciences Academy	✓	✗		S
South Asian Cultural, Heritage and Language Enrichment	✓	✗		V
Sport for Leisure	✗	✓	✓	P
Sports Leadership	✓	✓		S
STEM programme	✓	✗		S
Stretch & Challenge	✗	✓	✓	S
Student Council	✗	✓	✓	V
Student Magazine	✓	✗		S
Student Societies	✗	✓	✓	V
Teaching Academy	✓	✗		S
Team Gambia	✗	✓	✓	V
Theatre-in-Education Company	✓	✗		S
Ultimate Frisbee	✓	✗		P
Visual Arts Academy	✓	✗		S
Volunteering	✗	✓	✓	V
Young Enterprise	✓	✗		S



# Archaeology Academy



## Enrichment Overview

The Archaeology Academy is open to any students who are interested in the human past and the way in which it is studied. We will explore a wide range of topics, including British prehistory, scientific methods in archaeology, death and burial, and the Classical World and learn about some important archaeological sites. The first term consists of a series of seminars with several external speakers who are experts in their field. You will be able to complete an Extended Project Qualification (EPQ) in an area you wish to study further.



## Why choose this enrichment?

It is a chance to explore a subject not offered nationally at A level, but that can lead to a wide range of careers and has links across the Humanities and Sciences.

## How long will the enrichment last?

Full year.

## How much time a week will it involve?

One lesson per week.



## What will it cost?

Approximately £25 if attending a site visit or trip to British Museum.

## Who can sign up?

Any student, whatever your programme of study.

## How do I sign up?

At enrolment. It is not possible to do another enrichment alongside this.

# Basketball Performance Academy with City of Birmingham Rockets



## Enrichment Overview

The Basketball Academy is a high-performance squad playing in National Level competition. Training takes place within the College timetable and in sessions after the college day has finished. The Academy team is coached by very experienced staff from the City of Birmingham Rockets, who provide opportunities for students to train and play within their U18 structure outside of the college system. Fixtures are played in the Academy Basketball League and take place on Wednesday afternoons.



## Why choose this enrichment?

This enrichment gives you the opportunity to develop yourself physically, socially and emotionally. You will develop your teamwork and communication skills along with the organisation needed to balance training, game preparation and academic work.



## How long will the enrichment last?

The commitment to the Basketball Academy is for the full year as training for this enrichment continues into the summer term.

## How much time a week will it involve?

The commitment is for a minimum of 14 hours per week, which is a mixture of training and game time.

## What will it cost?

There are no costs to participate, however there may be options to purchase teamwear within the year.

## Who can sign up?

The Basketball Academy is aimed at those with previous experience of playing within an organised league and club environment. However, those students demonstrating the potential to develop to the levels required within the trials will be offered a place within the training squad. The Academy is a male performance sport; however females can attend sessions within the Sport for Leisure enrichment programme, which are led by Birmingham Rockets Coaches.

## How do I sign up?

Trials take place following enrolment and attendance is compulsory for those students wishing to be selected. It is not possible to do another enrichment alongside this.



# Beginners Spanish



## Enrichment Overview

This is a beginner Spanish course which will develop conversational skills. If you take holidays to Spain or are considering working in Spain in the future this course will give you some of the skills needed to get you started. It is a fun course, and you will have the opportunity to use the language lab.

## Why choose this enrichment?

It is a fun, relaxing session. It will develop new skills, which are great to put on a university or job application form. You are guaranteed to impress your friends and family when in Spain!!

## How long will the enrichment last?

Full year.

## How much time a week will it involve?

One lesson.

## What will it cost?

No cost. There may be opportunities for trips and visits. Students will need to cover travel costs.

## Who can sign up?

Anyone.

## How do I sign up?

At enrolment. It is not possible to do another enrichment alongside this.



# Codebreakers Society

**\*New for 2023/24\***



## Enrichment Overview

A group of students will sign up to and tackle the National Cipher Challenge (<https://www.cipherchallenge.org/>) as presented each year by the University of Southampton. Initial sessions start with an introduction to basic ciphers in September before looking at more difficult code cracking and the use of software. In October to December there is a sequence of challenges of increasing difficulty, posted by the university for students to try to be the first to decipher. There will be an opportunity within the enrichment to consider how the skills developed can be used in different careers.

## Why choose this enrichment?

*“At crypto club students often tell me that ‘I never thought I could do that’ ... It isn’t solving messages that matters but the journey they take to arrive at the solution.”*

Students should choose this enrichment to open up an area of mathematical thinking not normally taught in schools but is a world that increasingly drives our modern lives. What does it mean for something to be ‘encrypted’? How did we get from ancient ciphers to modern cryptography? What happened at Bletchley Park, and how did the need to crack codes in wartime lead to the invention of computers?

Students can take on this learning as part of a fun challenge that also builds teamwork and independent study skills – and getting to show off how good a codecracker they’ve become. Each team of students can submit their entries to the Cipher Challenge online and if completed, students can win the national competition. The best codebreakers in the country can receive medals at a special award ceremony in Bletchley Park.

## How long will the enrichment last?

From September to January.

## How much time a week will it involve?

1 session per week. These start with ‘lessons’ on ciphers and later become a shared meeting for students to discuss their progress and organise their teams.

## What will it cost?

Nothing. Students will need to be able to use a web browser on a phone or laptop.

## Who can sign up?

Any students. Strongly recommended for those looking into Pure Mathematics or Computer Science at university.

## How do I sign up?

Students should sign up at enrolment. It is not possible to do another enrichment alongside this.

# Computer Programming



## Enrichment Overview

This enrichment is an activity designed to support Computer Science students who have serious and realistic aspirations to develop their problem-solving and programming skills. This enrichment will increase your confidence working with different programming languages. This enrichment will be delivered by staff who have expertise in programming.

## Why choose this enrichment?

This enrichment will further develop your programming skills and prepare you for the challenges of university and employment.



## How long will the enrichment last?

September - May.

## How much time a week will it involve?

1 hour 30 minutes of contact time per week.

## What will it cost?

Nothing.

## Who can sign up?

Computer Science students.

## How do I sign up?

You can apply to join this course at enrolment. It is not possible to do another enrichment alongside this.

# Core Maths

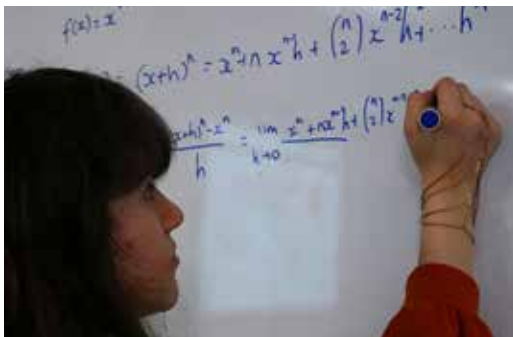


## Enrichment Overview

Core Maths is a Level 3 qualification designed to prepare students for the mathematical demands of study, work and life. The course content includes tax and national insurance, Fermi estimation, the normal distribution, confidence intervals, percentages, critical analysis of graphs, correlation and data analysis. There is a focus on applying the mathematics to real life contexts. This content is aimed at building students' confidence with mathematical ideas and applications in their professional and academic life.

## Why choose this enrichment?

The course has been designed to include mathematics content that closely aligns with other subjects, most notably A level Psychology, Sociology, Biology, Chemistry, Geography, Geology, Business Studies, Accounting and Economics. Students enrolling on BTEC Applied Science will also find the skills learned highly applicable to supporting their course. It would also be useful for students wishing to pursue careers in teaching or healthcare (such as nursing). The qualification is equivalent to an AS level in terms of UCAS points.



## How long will the enrichment last?

One year, over the course of Year 12. In May and June, there are two external 90-minute assessment papers.



Core Maths lessons are enjoyable and interesting. I always look forward to Core Maths lessons. The teacher is super friendly, nice, funny and always helps me whenever I need extra support.

**Student Avani Sienna Kaur**

### **How much time a week will it involve?**

3 lessons per week totalling 4.5 hours. Intervention sessions may extend this to 5 hours in certain weeks. Students will also need to complete some homework and independent study.

### **What will it cost?**

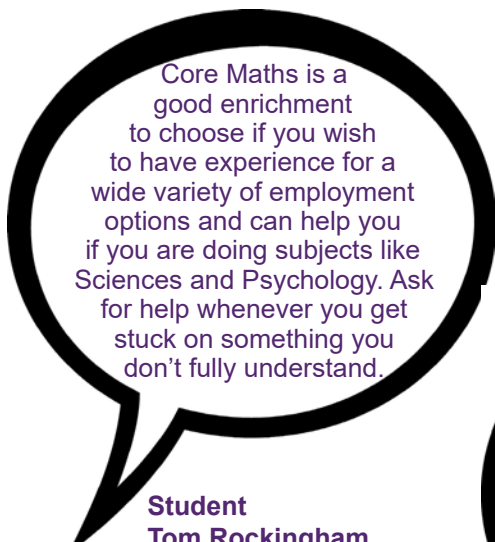
Students will need a scientific calculator (details at enrolment), which can be hired for a refundable deposit.

### **Who can sign up?**

Interested students should have achieved a grade 5 or above at GCSE Mathematics and must not be studying A level Mathematics or A level Statistics as one of their 3 (or 4) A level choices.

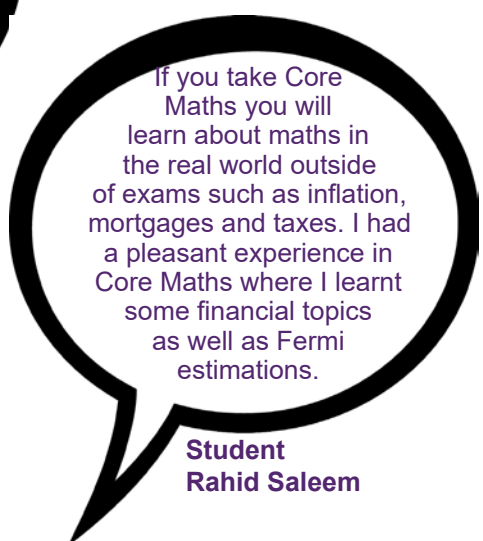
### **How do I sign up?**

Students should sign up at enrolment. Students may also sign up to another enrichment alongside Core Maths.



Core Maths is a good enrichment to choose if you wish to have experience for a wide variety of employment options and can help you if you are doing subjects like Sciences and Psychology. Ask for help whenever you get stuck on something you don't fully understand.

**Student  
Tom Rockingham**



If you take Core Maths you will learn about maths in the real world outside of exams such as inflation, mortgages and taxes. I had a pleasant experience in Core Maths where I learnt some financial topics as well as Fermi estimations.

**Student  
Rahid Saleem**

# Creative Writing



## Enrichment Overview

This enrichment offers a workshop-style approach to improving and exercising your creative writing talents.

There will be opportunities to enter creative writing competitions, hear from visiting speakers and publish your work.

## Why choose this enrichment?

This course is for fun and to allow you to indulge your creativity and develop your writing skills in a supportive group environment.

## How long will the enrichment last?

All of Year 12.

## How much time a week will it involve?

One lesson.

## What will it cost?

No cost.

## Who can sign up?

Any student, whatever your programme of study.

## How do I sign up?

At enrolment. It is not possible to do another enrichment alongside this.





# Cricket

## Enrichment Overview

The Cricket team is a summer activity which provides the opportunity for students to play within an organised College T20 league.



## Why choose this enrichment?

This enrichment gives you the opportunity to develop yourself physically, socially and emotionally. You will develop your teamwork and communication skills along with the organisation needed to balance training, game preparation and academic work.

## How long will the enrichment last?

The enrichment takes place within the summer term, although there is a yearly indoor competition in November.

## How much time a week will it involve?

The commitment is for 5 hours per week which is a mixture of training and game time.

## What will it cost?

There are no costs to participate, however there may be options to purchase Teamwear within the year.



## Who can sign up?

The Cricket team is aimed at female and male players with previous experience of playing within an organised league and club environment. However, those students demonstrating the potential to develop to the levels required within the trials will be offered a place within the training squad.

## How do I sign up?

Trials take place following enrolment and attendance is compulsory for those students wishing to be selected. You can join an autumn/spring sport alongside cricket. It is not possible to do another enrichment alongside this.

# CSI (Crime Scene Investigation)

## Solihull



### Enrichment Overview

Have you ever wondered what it would be like to understand why someone commits a crime or how to solve crimes? Welcome to the world of criminology. This enrichment activity is open to students who are interested in finding out about the exciting work surrounding criminology. Students will benefit from academic knowledge and some vocational practice involved in criminology such as policing and crime.

### Why choose this enrichment?

If you would like to find out more about criminology or are considering this for your career progression, this enrichment will give an enjoyable and exciting opportunity to investigate the world of criminology.

### How long will the enrichment last?

All year.

### How much time a week will it involve?

One lesson.

### What will it cost?

There may be possible costs for local travel and events.

### Who can sign up?

This course is for students studying any subject discipline who have an interest in finding out about criminology or policing or are planning a future career in this area.



### How do I sign up?

You can apply to join this course at enrolment. It is not possible to do another enrichment alongside this.

# Duke of Edinburgh's Bronze & Silver Awards



## Enrichment Overview

The DofE is an internationally recognised award favoured by employers and universities alike. By participating in the DofE Award you will develop key skills of confidence, dedication and commitment. You can design your own DofE programme. Activities within the DofE programme can be matched with those you are already doing. For example, activities like playing football, learning an instrument or being a member of the Student Council can be used as evidence towards the DofE bronze award.



Most enrichment options within this guide can be used as a skill evidence for the bronze and silver awards. See page 4 for more information about how your enrichment can support a DofE award.

## Why choose this enrichment?

Sign up to the DofE programme if you want to develop personal skills including time management, problem solving and initiative. It will also improve your interpersonal skills and give you friendships and memories for life!



## How long will the enrichment last?

September 2023-July 2024.

## How much time a week will it involve?

1 – 2 hours per week.

## What will it cost?

Bronze award: £24 for course sign-up fee; £10 at a future date for transport costs. Silver award: £24 for course sign-up fee; the silver award will incur some camp and travel costs.

## Who can sign up?

All Year 12 students can sign up to this course.

## How do I sign up?

You can apply to join this enrichment at enrolment. It is possible to do another enrichment alongside the Duke of Edinburgh Award.

# English Academy



## Enrichment Overview

This enrichment is open to all students of A level English Language or A level English Literature. Students participate in seminars on a range of literature and language topics with members of the English Department and academics from several universities, attend a Royal Shakespeare Company production if possible, and study for an Extended Project Qualification.

## Why choose this enrichment?

This enrichment offers students the opportunity to broaden their knowledge of English beyond the A level curriculum. The topics covered by the seminar programme in 2022-23 included Anglo-Saxon literature, Caribbean Gothic literature, Golden Age detective fiction, Gothic literature, nineteenth-century novels, Shakespeare's contemporaries, and the literature of surveillance. The students also

attended a Royal Shakespeare Company production of "All's Well That Ends Well". It also offers students the opportunity to study for an Extended Project Qualification supervised by a member of the English Department.



## How long will the enrichment last?

All of Year 12.

## How much time a week will it involve?

One lesson, plus your own independent study time for the Extended Project Qualification (EPQ).

## What will it cost?

If students attend a Royal Shakespeare Company production, approximately £25 towards the cost of transport and tickets.

## Who can sign up?

Any student of A level English Language or A level English Literature.

## How do I sign up?

At enrolment. It is not possible to do another enrichment alongside this.

# Extended Project Qualification (EPQ)



## Enrichment Overview

The EPQ is a piece of independent work of a student's choice, which can either be an artefact or an extended piece of academic writing. The focus is on research and planning skills leading to a final piece. There are a number of specialist routes available including through one of the subject academies. Students are encouraged to be creative and innovative. The work completed cannot duplicate any work completed for another subject but it can be related to it. The EPQ is assessed at A level standard and as such an A\* is achievable. Examples of recent projects include making a music video, writing a short story, creating a dance performance, producing an animation, creating a webpage and designing a business. The possibilities are endless!

## Why choose this enrichment?

The EPQ was created in conjunction with universities to help students develop the skills necessary for independent study at uni. EPQ students tend to develop excellent organisation skills and get a better understanding of how to manage and complete their own workload. This is not only useful for university and future employment, but also for A levels and BTEC studies. It is an excellent qualification to talk about in the personal statement for UCAS and may also lead to a reduced offer for university places.



## How long will the enrichment last?

September – completed in Year 12

## How much time a week will it involve?

One lesson.

## What will it cost?

No cost.

## Who can sign up?

All students.

## How do I sign up?

At enrolment. You can sign up for another enrichment activity alongside the EPQ.



# Football

## Enrichment Overview

Football is an outdoor activity which provides the opportunity for students to play within an organised College football league and train on a weekly basis.

### Why choose this enrichment?

This enrichment gives you the opportunity to develop yourself physically, socially and emotionally. You will develop your teamwork and communication skills along with the organisation needed to balance training, game preparation and academic work.

### How long will the enrichment last?

The enrichment takes place between August and May with league fixtures starting in September.

### How much time a week will it involve?

Mens Football team - The commitment is for 5+ hours per week which is a mixture of training and game time.

Womens Football team - The commitment is 1 training session per week with an additional 3+ hours on game weeks.

### What will it cost?

There are no costs to participate, however there may be options to purchase Teamwear within the year.

### Who can sign up?

The Football team is aimed at those with previous experience of playing within an organised league and club environment. However, those students demonstrating the potential to develop to the levels required within the trials will be offered a place within the training squad. Football is open to all, with training and games taking place under the appropriate governing body guidelines.

### How do I sign up?

Trials take place following enrolment and attendance is compulsory for those students wishing to be selected. It is not possible to do another enrichment alongside this.





# Health Ambassadors

## Enrichment Overview

If you want to go on to work within a health-related field after College, come and be a Health Ambassador! As a Health Ambassador you will be involved in educating, promoting, and raising awareness of health-related issues around the College. You will work with staff and external agencies to support the health and wellbeing of learners at Solihull Sixth Form College. In previous years, our Health Ambassadors have run workshops on healthy and toxic relationships, drug and alcohol awareness and promoting healthy eating habits. The Health Ambassadors have worked with organisations such as Umbrella, Urban Heard and Solihull MBC.



## Why choose this enrichment?

Anyone interested in health-related matters will thrive in this enrichment. If you are intending to follow a career in medicine, nursing, pharmacy, teaching or any people-facing role, this enrichment will give you the opportunity to increase your confidence, develop communication skills and work alongside external agencies delivering health-related education. In 2022-2023, the Health Ambassadors promoted the following health-related issues: World Aids Day, Autism Awareness Week and Mental Health Awareness Week. The Health Ambassadors also ran a series of workshop during Valentine's week that promoted healthy relationships, identified the signs of sexual harassment and discussed what coercive relationships are.

## How long will the enrichment last?

September to July of Year 12.

## How much time a week will it involve?

A weekly meeting for the duration of the enrichment. This will change depending on the health campaign you are involved in. Learners will be expected to initiate their own health promotion campaign at the College.

"I have developed my confidence as I am better equipped to approach people and explain key concepts at the heart of mental health."

**Student Health Ambassador  
2021 – 2022**



### What will it cost?

Nothing – just a willingness to give up some of your time.

### Who can sign up?

Students in Year 12 who are interested in health-related matters and study subjects related to health or plan to study / get employment in medicine, nursing, social work, teaching or other related health care courses.

### How do I sign up?

Sign up at enrolment. It is not possible to do another enrichment alongside this.



"The best part of being a Health Ambassador is the planning, organising and delivering of the health campaigns. I have learnt loads that will help in my future career of nursing."

**Student Health Ambassador  
2022 – 2023**



# Humanities Research School



## Enrichment Overview

Humanities students who join this specialist enrichment will have the opportunity to select at least two of the activities on offer investigating topical, ethical, global issues from the past and the present. This will give our students the chance to broaden their understanding of how decisions and actions in the past can influence future events. In the first instance students will be encouraged to develop skills of finding and reading academic materials. These skills can lead onto an Extended Project Qualification (EPQ) in an Humanities based topic area, giving students the chance to boost their university application with extra UCAS points.



## Why choose this enrichment?

The activities on offer include:

Extended Project Qualification (EPQ) – Humanities

'HUG' Lectures – Humanities University Group

University of Birmingham Masterclasses

Model United Nations – debates

## How long will the enrichment last?

September through to June (Year 12), September through to April (Year 13).

## How much time a week will it involve?

One lesson per week (plus your own study time for the EPQ).

## What will it cost?

Most activities are free. There may be some additional costs for transport to venues if needed.

## Who can sign up?

Year 12 and Year 13 students of Humanities-based subjects; Geography, Geology, History, Philosophy and Religious Studies.

## How do I sign up?

Year 12 students can sign up during and after enrolment at the start of Year 12. Year 13 students can enrol at the start of Year 13 - EPQ in Year 13 is at the discretion of the Humanities Curriculum Leader.

# Kitson Award for Services to the Community



## Enrichment Overview

Terry Kitson was a governor of the College between October 1992 and September 1999. He is greatly missed by his family, colleagues and friends, but his work for the College is remembered through the naming of the Kitson Building and this annual award to support students who are providing a valued service in the wider community.

## Why choose this enrichment?

The award will be made in the form of a bursary to Year 12 or 13 students who are involved in voluntary work within the wider community in the UK or overseas. Student may wish to use the award to support voluntary work which they are currently involved in, or an activity which they are planning during a 'gap' year.



The award is seen as a competitive event, where the successful student(s) will have to demonstrate that they have satisfied a number of criteria. The selection process is also designed to support the student in developing and refining their project planning and presentation skills.

A total bursary of up to £2,000 is available to be shared between the successful applicants. In the event of two or more successful applicants, the selection panel will allocate a proportion of the bursary to each project, which is commensurate with its level of need.

## How long will the enrichment last?

6 weeks during Term 2.

## How much time a week will it involve?

One lesson per week.

## What will it cost?

No cost.

## Who can sign up?

Open to all students.

## How do I sign up?

Register your interest in January 2024. It is possible to do another enrichment alongside the Kitson Award.

# Musical Activities



## Enrichment Overview

This is your chance to get creative! Musical activities vary each year, but typically involve instrumental and vocal groups that all perform in the various concerts that the music department holds throughout the year. Examples include the College Choir, a Soul Band and various chamber music ensembles. All music students must sign up to this, and all take part in Choir every week as part of their course, but this enrichment is also open to non-Music students who are simply looking for a creative outlet.

## Why choose this enrichment?

This enrichment allows music and non-music students to work together, as well as giving the opportunity for non-music students to use the music facilities at the College. Successful bands/groups will have the opportunity to perform at some of the high profile college events.

## How long will the enrichment last?

September - April.

## How much time a week will it involve?

One lesson a week, plus rehearsals and evening performances.

## What will it cost?

No cost.

## Who can sign up?

Music and non-music students who can play an instrument or sing and can read stave notation.

## How do I sign up?

At enrolment, but if you miss signing up, speak to the Music teacher. It is not possible to do another enrichment alongside this.



# Netball

## Enrichment Overview

The Netball team is an all year activity, which provides the opportunity for students to play within an organised College netball league.



## Why choose this enrichment?

This enrichment gives you the opportunity to develop yourself physically, socially and emotionally. You will develop your teamwork and communication skills along with the organisation needed to balance training, game preparation and academic work.

## How long will the enrichment last?

The enrichment takes place between August and May with league fixtures weekly.

## How much time a week will it involve?

The commitment is for 5 hours per week, which is a mixture of training and game time.

## What will it cost?

There are no costs to participate, however there may be options to purchase Teamwear within the year.

## Who can sign up?

The Netball team is aimed at female players with previous experience of playing within an organised league and club environment. However, those students demonstrating the potential to develop to the levels required within the trials will be offered a place within the training squad.

## How do I sign up?

Trials take place following enrolment and attendance is compulsory for those students wishing to be selected. It is not possible to do another enrichment alongside this.





# Pre-Medical School



## Enrichment Overview

The Pre-Medical school is an enrichment activity designed to support students who have serious and realistic aspirations to study medicine at university. Students will have the opportunity to explore the world of Medical Science outside of the syllabus. It will prepare students for university applications by developing their awareness of current affairs within this field, understanding of the medical profession and develop a greater appreciation of the essential skills and relevant experience required for a successful university application. They will develop their oracy and confidence while discussing ethical issues as well as current affairs.

Types of activities include:

- Science book club
- Preparation for UCAT/BMAT tests
- Ethics debates
- Developing problem solving skills
- Developing study skills in Science
- Work experience
- Visiting speakers
- Trips to universities and master classes



Students are also encouraged to take an Extended Project Qualification (EPQ) in a relevant medically-related field. Partner universities include: Aston, Birmingham, Keele, Leicester and Liverpool.

## Why choose this enrichment?

Experience gained during this enrichment will give you a detailed insight into the skills and knowledge required to make a successful application to study medicine.

## How long will the enrichment last?

Support provided by this enrichment will run throughout Year 12 and the application process, culminating in Year 13 with interview preparation.

## How much time a week will it involve?

Structure and frequency of meetings will be finalised once enrolment figures are known.

## What will it cost?

Attempts are made to keep costs to a minimum. There will be occasional transport costs.

## Who can sign up?

Students must be enrolled onto A level Chemistry and at least one other Science A level. GCSE English and GCSE Maths must be at least grade 6.

## How do I sign up?

Sign up at enrolment. It is not possible to do another enrichment alongside this.

# Psychology Research School



## Enrichment Overview

Psychology students who join this specialist enrichment will have the opportunity to work with psychology professionals / researchers and visit universities. This opportunity gives students the chance to investigate the science behind psychology. In the first instance, students will investigate famous scientific studies and their methods of research; then students will develop their own research project. This enrichment leads to an Extended Project Qualification (EPQ), giving students the chance to boost their university application with extra UCAS points.

If you are interested in continuing to study Psychology (or a combined degree such as Psychology and Criminology) then the Psychology Research School will be very useful for you. All students who do this enrichment must be studying A level Psychology.

## Why choose this enrichment?

The Psychology Research School will equip you with many transferable skills. Such as:

- Develop knowledge beyond A level Psychology
- Grow your communication skills
- Develop the ability to research
- Refine your critical thinking
- Improve your employability

THE UNIVERSITY OF  
WARWICK

The Psychology Research School will give you a real insight into how psychologists gather data and use it to formulate general laws of human behaviour. You will also get the chance to conduct your own psychological experiment. In previous years students have investigated:

- Why do we Dream?
- Does the media cause eating disorders?
- What is the impact of fame on child stars?

## How long will the enrichment last?

September 2023 - May 2024.

## How much time a week will it involve?

One lesson and termly visits by speakers and university trips.

## What will it cost?

Cost of travel to universities. This year we visited Newman University, Birmingham University and Aston University.

## Who can sign up?

Year 12 Psychology students - students who are interested in studying a Psychology-related degree at university. This can include Criminology, Forensic Psychology and combined degrees with Psychology components.

## How do I sign up?

Initial interest logged during Year 12 enrolment. It is not possible to do another enrichment alongside this.

# Readiness for work in Health and Social Care

## \*New for 2023/24\*



### Enrichment Overview

Are you looking to pursue a career in healthcare? Would you like to demonstrate to universities and employers that you have the skills needed?

This enrichment will give you an awareness of the range of pathways and different careers within health and social care.

You will take part in a variety of activities that will deepen your knowledge of the requirements and skills needed to enter those careers. You will also construct and develop a series

of campaigns to raise awareness of a variety of health and social care initiatives, which will be shared within the College environment.



### Why choose this enrichment?

This enrichment will give you an awareness of the range of pathways into different careers in health and social care and provide you with opportunities to develop the skills needed within them. You will also be able to support the development of knowledge in your peers with regard to health and social care initiatives and areas of concern.

### How long will the enrichment last?

Full year.

### How much time a week will it involve?

One lesson per week.

### What will it cost?

There are not costs to take part, however there may be costs to attend any trips which may occur in the course.

### Who can sign up?

The enrichment is suited for students on a Health & Social Care course and those students with an interest in moving into a Health & Social Care career.

### How do I sign up?

You can apply to join this course at enrolment. It is not possible to do another enrichment alongside this.

# Road Map to Employment



## Enrichment Overview

Led by a member of the Careers team, this enrichment takes the form of a series of workshops with 10-15 students, which will help students who are seeking employment to be able to:

1. Identify suitable job roles and employers
2. Submit quality applications in line with the employer's requirements
3. Prepare for interviews and assessment centres
4. Secure a desired role
5. Be ready to start the role

The content will support students who are seeking employment or apprenticeship after college.

The workshop topics are:

- Understanding your employment needs
- Exploring possibilities (including job hunting process)
- Applying for a role
- Preparing for an interview
- Preparing for an assessment centre
- Getting ready to start a role

The workshops will last about 1 hour, depending on the complexity of the topic.

## Why choose this enrichment?

This enrichment will help develop the knowledge and skills needed to successfully and confidently apply for and secure employment. These are critical skills that will benefit students through their working life.

## How long will the enrichment last?

The enrichment would run for selective student interest groups throughout the year, prioritising Year 13 employment seekers.

## How much time a week will it involve?

1 hour.

## What will it cost?

No cost.

## Who can sign up?

Students applying for apprenticeship or employment options.

## How do I sign up?

Via Coaching Class or referral by Coach / Self-Referral. You can sign up to another enrichment alongside Road Map to Employment.

# Rugby with Birmingham Moseley Rugby Club



## Enrichment Overview

The Rugby team is an all year activity, which provides the opportunity for students to play within an organised College Rugby league.



## Why choose this enrichment?

This enrichment gives you the opportunity to develop yourself physically, socially and emotionally. You will develop your teamwork and communication skills along with the organisation needed to balance training, game preparation and academic work.



## How long will the enrichment last?

The enrichment takes place between September and May with league fixtures weekly.

## How much time a week will it involve?

The commitment is for 5 hours per week which is a mixture of training and game time.

## What will it cost?

There are no costs to participate, however there may be options to purchase Teamwear within the year.

## Who can sign up?

The Rugby team is aimed at those with previous experience of playing within an organised league and club environment. However, those students demonstrating the potential to develop to the levels required within the trials will be offered a place within the training squad.

Rugby is open to both males and females for training. Fixtures are for the male team only, however through the link with Birmingham Moseley there are opportunities for females to seek playing time through the Club.

## How do I sign up?

Trials take place following enrolment and attendance is compulsory for those students wishing to be selected. It is not possible to do another enrichment alongside this.

# Social Sciences Academy



## Enrichment Overview

This is an opportunity for A level Economics, A level Politics, A level Sociology and Level Three Diploma Criminology students to examine topical issues at a greater depth than is possible on your course, and to complete an Extended Project in an area of particular interest to you that takes you beyond the specification of your course. If you join this course you will be working in conjunction with members of the Social Sciences team at the College and lecturers from local universities.

## Why choose this enrichment?

The course will make you even more marketable to university admissions tutors and will improve your curriculum vitae. Moreover, it will help you to explore your subject in great depth, so that you will get more out of your A Level course and further develop your skills.

## How long will the enrichment last?

This is a full year course, as you will be working on your Extended Project and participating in a variety of Stretch and Challenge sessions.

## How much time a week will it involve?

One lesson a week for the main session and approximately 2 hours a week of independent study in completing your Extended Project Qualification.



## What will it cost?

There may possibly be some local transport costs as we often travel to one of the local universities for master classes.

## Who can sign up?

This course is for students intending to study Economics, Politics, Sociology, Criminology or a related subject at a competitive university.

## How do I sign up?

You can apply to join this course at enrolment if you have a strong set of GCSE results and would like an additional challenge. Places are limited and there will be a selection process to decide which students can join the group. It is not possible to do another enrichment alongside this.

UNIVERSITY OF  
BIRMINGHAM





# South Asian Cultural, Heritage and Language Enrichment



## Enrichment Overview

Urdu is the national language of Pakistan. It is the fourth most spoken language in the UK. This enrichment is open to everyone regardless of your ability. For those of you who already speak Urdu you are likely to be immersed in it at home, but lack the understanding of the language. Language and culture are inextricably intertwined, so learning Urdu can be a good way to understand your heritage



better. For those of you who are new to Urdu, this enrichment will help you learn the basics of the language such as learning the alphabet, common phrases and simple sentences. You will be able to practice your new language alongside more proficient Urdu speakers.

## Why choose this enrichment?

This enrichment will enable you to immerse yourself in all things South Asian. We hope that students can bring their own cultural heritage to this enrichment and share their experiences with others.

## How long will the enrichment last?

September 2023 - July 2024.

## How much time a week will it involve?

One period per week.

## What will it cost?

No cost.

## Who can sign up?

Any student can sign up for this enrichment. You do not have to be from South Asia to join this enrichment. It is suitable for anyone who wants to learn more about South Asia. This enrichment involves planning cross-college events. It is therefore open to anyone who has an interest in photography, dancing, fashion, music, presenting, creating displays, making posters and all aspects of event-planning.

## How do I sign up?

You can apply to join this enrichment at enrolment. It is not possible to do another enrichment alongside this.

# Sport for Leisure

## Enrichment Overview

These sessions are recreational sport and physical leisure activities ranging from Badminton, 5-a side football, Table Tennis, Fitness, Basketball and many others. They occur across the middle of the day on at least two days per week. Students may use the gym independently after undertaking an induction.



## Why choose this enrichment?

Sport for Leisure enrichment activities provide students with the opportunity to take part in a range of supervised activities. Students will develop new friendships and have a physical outlet in which they have fun whilst being active.

## How long will the enrichment last?

These sport activities will occur from September - July.

## How much time a week will it involve?

Sessions will be 55 mins with a minimum of 4 occurring within the week and will be a range of different activities.

## What will it cost?

No cost.

## Who can sign up?

All students can participate and are encouraged to do so.

## How do I sign up?

Sign up when the sports are advertised. You can sign up to another enrichment alongside Sport for Leisure.



# Sports Leadership (Level 2 Award)

## Enrichment Overview

The Level 2 Sports Leaders course is a recognised qualification which allows participants the opportunity to gain experience and skills of planning and leading sports activities. The course has a combination of practical and theoretical assessment which needs to be completed to a sufficient level to be certificated.



## Why choose this enrichment?

The Level 2 Award in Sports Leadership will give learners the chance to develop their organisation, motivation and communication skills, whilst also focusing on positive role models in sport, how to mentor others, and how to use leadership skills in a variety of settings.

## How long will the enrichment last?

The course runs from September to April.

## How much time a week will it involve?

Students attend the course for one lesson per week. Students must also complete 10 hours of voluntary work to demonstrate their leadership skills.



## What will it cost?

There are no costs for the actual course, but there may be costs for travel depending on how the voluntary hours are met.

## Who can sign up?

Anyone looking to work in the sports industry or to work with children, including those interested in becoming teachers or coaches. BTEC Sport students take this enrichment as part of their pathway.

## How do I sign up?

At enrolment. You can sign up for another enrichment alongside Sports Leadership.

# STEM Programme



## Enrichment Overview

The STEM enrichment is an opportunity for students to further develop their skills and passion for Science, Technology, Engineering and Maths. Students will develop research skills and work on a project which could be submitted for a CREST award alongside exciting trips and visits from external speakers. CREST is the British Science Association's scheme for STEM project work that inspires young people to think and behave like scientists and engineers. This is an independent project highly regarded by Universities and Employers in STEM subjects. It will give students the chance to explore areas of STEM that are not on the specifications of their subjects. Throughout the year, you will also have opportunities for trips and visits.

## Why choose this enrichment?

You will enrich and broaden your experiences of STEM, outside of your subject specification. You will develop research, critical thinking and practical skills. By completing the project you will be able to demonstrate you can work independently and are self-motivated.

## How long will the enrichment last?

Full year

## How much time a week will it involve?

One lesson. You will be expected to work independently on your project outside of lesson time.

## What will it cost?

There may be some costs to cover travel for trips and visits.

## Who can sign up?

Open to all students who study an A level or BTEC in Science or Maths. If we have high numbers of interest we may go through a selection process. We particularly welcome female students as they are under-represented in STEM careers.

## How do I sign up?

At enrolment. It is not possible to do another enrichment alongside this.

# Stretch & Challenge Programme



## Enrichment Overview

The Stretch and Challenge enrichment provides extensive support and guidance for students applying to Russell Group universities including Oxford and Cambridge.

It consists of:

- a parents evening for students and parents/carers who may have little experience of the university application process
- preparation for university tests and interviews
- support with personal statements
- extra support for first generation university applicants applying to competitive courses
- a place on the Stretch & Challenge Summer School in June
- access to a Teams group with links, activities and aptitude tests which will strengthen applications to university
- a specific programme for those students considering applying to Oxford or Cambridge (Students interested in medicine should also ensure they have signed up to the Pre-Medical School.)

## Why choose this enrichment?

This enrichment aims to make students aware of aspirational university options early on in their time at college so that they can apply to summer schools and masterclasses at the earliest possible opportunity. It provides a community and support basis for students who enjoy academic pursuits and encourages students to stretch and challenge themselves by helping them access resources and events beyond their classroom lessons.

## How long will the enrichment last?

December of Year 12 until January of Year 13.

## How much time a week will it involve?

This will vary from month to month where sometimes just attendance at a meeting might be expected. All participants are expected to attend the Stretch and Challenge Summer School in June and if a student decides to apply for a competitive course or university such as Oxford or Cambridge, they will be expected to dedicate a lot of their independent study time to their application.



### **What will it cost?**

Nothing, other than optional trips.

### **Who can sign up?**

There is a recruitment process for the Stretch and Challenge Programme. Usually students will need to have a very good GCSE profile of strong passes and an academic record would contain evidence of:

- unwavering enthusiasm and interest in their subject and other academic pursuits.
- being proactive and independent.
- having the desire to seek out wider reading and research opportunities.
- taking part in some sort of extra-curricular activity – this could be the Extended Project Qualification or wider reading or work experience.

### **How do I sign up?**

Students with a strong GCSE profile are invited to a meeting in December to address the key commitments of the programme and are invited to attend subsequent events. For the Stretch and Challenge Summer School in June, interested students sign up via Microsoft Forms in May of Year 12. You can sign up for another enrichment alongside the Stretch & Challenge Programme.





# Student Council



## Enrichment Overview

As a member of the Student Council, you can be involved in shaping the decisions that involve all students at Solihull Sixth Form College. The Student Council is the voice of the student body. They help share student ideas, interests, and concerns with the college wide community and to members of the Senior leadership team. Being a member of the Student Council will help you to develop important skills that will support your progression beyond College. You will develop leadership skills by organising and carrying out educational and charity events that contribute to the College's spirit and community. You will develop communication skills because this role requires you to talk to everyone from your peers to governors to teachers. Roles in the Student Council include chair, vice chair, charity officer and voice officer to name but a few. The Student Council is set up to help improve the College by creating a place where student opinion can be developed, shared, and presented to the College senior leadership team, governors, staff and other stakeholders.

## Why choose this enrichment?

You will develop many skills that are sought after by universities and employers, such as communication, organisation, time management and leadership, while connecting with a wide range of students and other professionals in College. You will be involved in organising charity, educational and events, raising awareness throughout the academic year. This academic year Student Council members were involved in organising the Christmas charity events which included donating food parcels to Bethany food bank, the Eid event and the College's first Community Iftar event. Student Council members also supported 'Wear it Pink' and the Macmillan Coffee Morning.



**How long will the enrichment last?**

This is a 2-year commitment.

**How much time a week will it involve?**

Weekly 1-hour meeting. You will be involved in supporting events such as charity events, awareness raising events and be involved in student panels therefore your time commitment will vary every week.

**What will it cost?**

No cost.

**Who can sign up?**

Open to all Year 12 students.

**How do I sign up?**

Sign up at enrolment. You can sign up for another enrichment while also being part of Student Council.

“Being part of the Student Council was an extremely fulfilling experience for me, with the move from Vice-Chair to Chair allowing me to develop key teamwork, leadership and decision-making skills. The events such as the Fun Day, my position on the governing body and the Anti-Racism group and the Culture Week were highlights of my College experience. I have made great friends through Student Council and it supported me through applying for university and looking toward a life after college.”



**Student Daisy Maskell,  
Chair of Student Council**

# Student Magazine



## Enrichment Overview

We will be producing a student-led and written termly magazine. You will be supported in developing your writing skills to produce research and write articles about College and student interests.

## Why choose this enrichment?

This enrichment is particularly relevant if you are interested in a career in journalism, marketing, advertising etc, or if you enjoy writing, but prefer non-fiction writing to more literary forms. You don't need any previous experience – just enthusiasm.

## How long will the enrichment last?

Full year.

## How much time a week will it involve?

One lesson, but you may want to put in additional time, particularly around publications deadlines.

## What will it cost?

No cost.

## Who can sign up?

Open to all.

## How do I sign up?

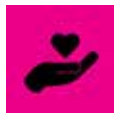
At enrolment. It is not possible to do another enrichment alongside this.



# Student Societies

## Enrichment Overview

Being at College isn't all about academic study; it's also a time to meet new people and try out new experiences. Our enrichment programme of student-led clubs and societies encourages you to widen your horizons and develop valuable skills that will complement the knowledge gained in your lessons. We encourage all students to take up an enrichment. Student societies can encompass any interest, activity, or hobby that you may have. Any student can lead a society. The only requirement is that you must have at least 5 like-minded people who want to be in your society. Student societies are organised and operated by students for students. Examples of recently run societies are Environmental Club, British Sign Language enrichment, Anime & Manga Society, LGBTQ+ Society and Islamic Society to name but a few.



## Why choose this enrichment?

There are many benefits of being involved in student-led societies. You can explore your interests and passions, make new friends, and get involved in many aspects of College life including being involved in events and community projects. You will develop many transferable skills such as communication, leadership, and teamwork skills which are highly valued by Universities and Employers.

## How long will the enrichment last?

Termly or yearly depending on student interest.

## How much time a week will it involve?

You can attend as often as you would like. Each society lasts approximately one hour per week.

## What have our students said about student led enrichments?

"I am part of the **Islamic Society**. This year I have been involved in organising the College's first Iftar event. I have made so many friends and have many great experiences."

"Being a part of the **LGBTQ+ Society** has helped me find my own identity. It has given me the confidence to own my true self. I have also met many like-minded people."

**What will it cost?**

No cost.

**Who can sign up?**

Open to all Year 12 and 13 students.

**How do I sign up?**

Speak to the Student Development Team based in Hampton building, Room H231. You can sign up for another enrichment alongside student societies and clubs.





# Teaching Academy



## Enrichment Overview

This specialist enrichment activity is open to all students who are interested in a teaching career. Students will benefit from a bespoke teaching programme that has been tailored to provide students with both academic and vocational knowledge of teaching practice. Essentially you will learn some of the building blocks of how to teach. This enrichment will be delivered in partnership with South Birmingham College Teaching School and the Summit Learning Trust.

## Why choose this enrichment?

If you are considering teaching for your career progression, this enrichment will be extremely useful. You will gain knowledge of teaching practice and participate in work experience or school-based visits. There is also the opportunity to complete an Extended Project – a qualification highly valued by universities.

## How long will the enrichment last?

Full year.

## How much time a week will it involve?

One period a week for the main session and 1-2 hours a week of independent study in completing your Extended Project Qualification.

## What will it cost?

There may be possible costs for local travel and events. A clear DBS 'Disclosure and Barring Service' may also be needed. The cost of the DBS is approximately £60.00 and details of how to pay will be provided.

## Who can sign up?

This course is for all students studying any subject discipline who has an interest in becoming a teacher in the future.

## How do I sign up?

At enrolment. It is not possible to do another enrichment alongside this.





# Team Gambia

## Enrichment Overview

This fantastic project involves a visit to The Gambia in West Africa to complete voluntary work in a nursery school in Abuko on the outskirts of Banjul. For students it really is a special and unique experience which will improve their communication skills, develop confidence and the ability to work successfully as part of a team.

### Why choose this enrichment?

Students from previous trips always say it's the best thing they have ever done – an experience that money cannot buy. The fundraising is a challenge, but being able to see the difference that it makes to children's lives, makes it more than worthwhile. They love teaching the children in the school, being a part of Gambian culture and getting to know each other well is the added and unexpected bonus.



### How long will the enrichment last?

One week in either November or December 2024.

### How much time a week will it involve?

Regular meetings with lead staff in relation to planning for the trip (approximately 12 meetings in the January to November period). In addition, there is a considerable individual time commitment for fundraising and preparing teaching materials.

### What will it cost?

The trip costs approximately £1,400 per student plus approximately £75 for vaccinations/anti-malaria tablets. In addition, students are expected to fundraise at least £400 each (from January - November) to improve teaching facilities and sanitation at the school and pay teachers' salaries.

### Who can sign up?

Places are available for up to 30 enthusiastic Year 12 Students, who are interested in learning more about life in a developing country. You can register your interest by emailing Janice Hamilton, Vice Principal.

### How do I sign up?

Students will be invited to a meeting in December 2023/January 2024. The 30 places will be allocated on a first come first served basis. You can sign up for another enrichment alongside Team Gambia.

# Theatre-in-Education Company



## Enrichment Overview

The Drama enrichment is a unique opportunity to work as a theatre company and experience producing a production for public performance. This enrichment will involve developing performance and/or design skills to a live brief where you will work as young professionals to create imaginative and bold theatre.

## Why choose this enrichment?

The experience is just the sort of challenge universities and employers value highly, for budding Drama students or creatives alike. You will also develop a range of transferable skills, such as teamwork, public speaking, leadership and problem solving. It is an opportunity to develop your creativity by taking on a production role such as a costume designer, technical designer, director or performer.

## How long will the enrichment last?

October – July.

## How much time a week will it involve?

One lesson, with some post-4pm rehearsals where necessary.

## What will it cost?

There could be travel costs if any trips to theatre performances are arranged.

## Who can sign up?

The opportunity is best suited to students seeking to progress to competitive HE courses in the Performing Arts and other creative subjects. However, we would also encourage students who have an interest in the theatre to join.

## How do I sign up?

At enrolment. It is not possible to do another enrichment alongside this.



# Ultimate Frisbee - \*New for 2023/24\*

## Enrichment Overview

Ultimate Frisbee is a grassroots team sport, involving a wealth of different skills. With 5-v-5 (indoor) or 7-v-7 (outdoor) games, Ultimate is home to a wide array of players ranging from different skill levels. It is Olympically-recognised and has international competitions, as well as professional leagues like the 'American Ultimate Disc League'. This enrichment will cover the basic rules and techniques utilised in Ultimate, as well as delving into the deeper, more technical elements that drastically improve the way you play.



## Why choose this enrichment?

This enrichment will be run by a UK National Champion, who has coached at all levels of Ultimate from international clubs, to school teams. We welcome players of all skill levels and aim to train you into proficient Ultimate athletes. A large focus of the sport is 'Spirit of the Game', with teams being ranked on the sportsmanship, fair-mindedness, and knowledge of the game, which is something that is very important to Ultimate's core values and the way it is officiated. Unlike a lot of other



sports, Ultimate prides itself on being self-officiated. This means that players need to become confident on the rules and technicalities to compete and discuss them with other players. Ultimate can also be highly athletic, so if you are just looking for a fun and interesting sport to help yourself get fit, then this is the one for you.

## How long will the enrichment last?

This enrichment is weather dependant. As such, it is likely to run from September – October half-term and again from March – July.

## How much time a week will it involve?

One hour per week.

## What will it cost?

There are not costs to take part.

## Who can sign up?

Any students interested in taking on a fun and physical activity.

## How do I sign up?

Sign up at enrolment. It is not possible to do another enrichment alongside this.

# Visual Arts Academy



## Enrichment Overview

The Visual Arts Academy is a Qualification Enrichment. Year 12 students will gain an EPQ qualification which is assessed at A Level standard and can contribute towards university and employment applications. Students will produce a piece of independent work based on any aspect of the Visual Arts. Students may choose to work on specialisms such as Architecture, Painting, Ceramics, Textiles, Fashion Design, Photography etc. Students are encouraged to be creative and innovative. The work completed cannot be connected to any aspect of their A Level subjects.

**Why choose this enrichment?** What our students say:

“The Visual Arts Academy really aided the progression of my college studies as it allowed me to explore an area of art that was not included in my BTEC Course and that I had always wanted to pursue. Not only did the course fulfil that intention, but it taught me such skills as preliminary research and methods of presentation and communication that I have used in my work since and will continue to utilise, especially at university.” - Nina Dredger (BTEC Art & Design) Destination: Goldsmiths, University of London - BA (Hons) Curating

Case Study examples:

Case Study 1: This course is ideal for Y12 students aspiring to study Architecture at University as these courses require a portfolio alongside qualifications.

Case Study 2: This course is fantastic for Y12 students who have not studied/achieved a Visual Arts GCSE but would like to embark on a Visual Arts investigation in a specialism of choice.

Case Study 3: This course would provide an excellent opportunity for a Y12 student studying an Arts course, who wish to develop work for portfolio that is not covered in the Visual Arts A Levels we offer.

**How long will the enrichment last?**

EPQ – Starts in September and completed in Year 12.

**How much time a week will it involve?** 1 lesson per week and independent study - to take place in the ‘Enrichment’ slot of the timetable.

**What will it cost?**

Students will need to pay for costs of sketchbooks, printing and other specialist materials. The Visual Arts department sell most materials needed at a reduced cost.

**Who can sign up?** All Year 12 students (both A level and BTEC).

**How do I sign up?** When you attend your enrolment interview in August you will be able to add the Visual Arts Academy EPQ to your programme of study. It is not possible to do another enrichment alongside this.

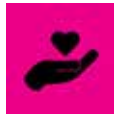


# Volunteering

## Enrichment Overview

Volunteering is a practical way for students to start thinking critically about some of the social issues which people face across the country. Whether it is raising money for a homelessness charity, supporting health ambassadors with a campaign on drugs, or raising awareness about breast cancer, volunteering is a great introduction to these difficult topics and shows students how they can take steps to make a difference. At Solihull Sixth Form College you can volunteer in several ways:

- Being involved in a charitable event at college e.g., Christmas food bank appeal
- Working directly for a charity e.g., Umbrella
- Being a College Health Ambassador
- Being a mentor to other students
- Supporting College events such as the Community Iftar, Fun Day and the College's Culture Week Fashion Show.
- Team Gambia volunteer project



Remember that your volunteering experience can be used as evidence for the Bronze and Silver Duke of Edinburgh awards (see enrichment guide page 16). The College works with the Shirley Lions Club to help you to achieve a volunteering accreditation. Depending on the number of hours you volunteer for you can achieve a gold, silver, or bronze award.





**Why choose this enrichment?**

Volunteering can provide a healthy boost to your self-confidence and self-esteem. Being a volunteer can also give you a sense of pride and identity. Volunteering will allow you to develop skills such as communication, time-management, leadership, delegation, and problem-solving. The skills you gain from volunteering can also be added to your personal statement and job applications.

**How long will the enrichment last?**

Volunteering can be undertaken at any time during your two years at the College.

**How much time a week will it involve?**

At least 1 hour.

**What will it cost?**

No cost.

**Who can sign up?**

All Year 12 students.

**How do I sign up?**

Sign up at enrolment. You can do this enrichment alongside another enrichment.





# Young Enterprise



## Enrichment Overview

Do you have aspirations to be your own boss and experience what it is like to set up and run your own business? Do you have a business idea? Then this is for you! You will work with a business mentor and other students to develop your business idea, company name and manage the company finances. You will promote and sell to the public through pop up shops and an online store and gain the practical business experience, adaptability, entrepreneurial mindset and employability skills that a university, apprenticeship or future employer will be impressed with. There is also the opportunity to compete with other schools/colleges at a local, county, regional and national level, offering a variety of learning development opportunities including public speaking, interview skills and a chance to network with other companies locally, regionally and across the UK.

## Why choose this enrichment?

If you have any interest in being an entrepreneur, applying for a business degree, or being involved in self-employment; it will give you the skills that you need – as well as a taste of what the world of work is actually like. It can be an opportunity to explore your creativity, develop your confidence and to feel the freedom of being your own boss. From participating in this enrichment, you will have serious evidence of direct experience of business activities. This is exactly what university business courses will want to see. They will acknowledge that you are not averse to a bit of risk-taking, enterprising, or commitment and will see this as a good sign for your general fit for the degree-level business course.

## How long will the enrichment last?

All academic year.

## How much time a week will it involve?

1 lesson per week, plus additional activities for fundraising etc.

## What will it cost?

Nothing, but you will need to participate in some fundraising activities to cover the cost of your production, marketing and running costs.

## Who can sign up?

Year 12 & 13 Applied Business and A Level Business students, plus anyone who is looking to take a Business course at university.

## How do I sign up?

At enrolment. It is not possible to do another enrichment alongside this.

# Find us on social media



[facebook.com/solihullsixthform](https://facebook.com/solihullsixthform)



[twitter.com/sfcsapply](https://twitter.com/sfcsapply)



[instagram.com/sfcsolihull](https://instagram.com/sfcsolihull)



[youtube.com/TheSixthFormCollegeSolihull](https://youtube.com/TheSixthFormCollegeSolihull)

**Visit the website**  
**[www.solihullsf.ac.uk](http://www.solihullsf.ac.uk)**