



**Solihull  
Sixth Form  
College**  
SUMMIT LEARNING TRUST

# Enrichment Guide 2019/20



# Contents

<b>Enrichment Options</b>	<b>3</b>
<b>Personal &amp; Skills Development:</b>	
Career Guidance	5
Creative Writing	6
Stretch & Challenge Programme	7
Team Gambia	8
Volunteering	9
<b>Additional Qualifications:</b>	
ABC Spanish	10
Core Maths	10
Extended Project Qualification (EPQ)	11
<b>Academies and Schools:</b>	
Humanities Academy	12
Pre-Medical School	13
Psychology Research School	14
Shakespeare Academy	15
Social Science Academy	16
Visual Arts Academy	17
<b>Performance:</b>	
ABRSM Music	18
Musical Activities	19
Solihull Theatre-in-Education Company (Sol-TIE)	20
<b>Sport:</b>	
Level 2 Award in Sports Leadership	21
Performance Sport - Men's Basketball	22
Performance Sport - Men's Cricket	22
Performance Sport - Men's Football	23
Performance Sport - Women's Football	23
Performance Sport - Women's Netball	24
Performance Sport - Men's Rugby	24
<b>Societies &amp; Social Development:</b>	
Bike User Group	25
Charity Ambassadors	25
Health Ambassadors	26
Student Societies	27
Student Council	28

## Enrichment Options

Do you want to stand out from the crowd?

Participating in our enrichment programme alongside your academic programme will help develop your skills, knowledge and experience giving you the edge when applying for further education courses or employment. Find out more about the opportunities in this guide.

- **Personal & Skills Development** – develop your professional and personal skills to improve your employability and application success.
- **Additional Qualifications** – add to your CV and give applications a boost with a new qualification.
- **Academies & Schools** – deepen your subject knowledge with an academy or school and link to an EPQ for an additional qualification.
- **Performance** – develop your musical and drama skills.
- **Sport** – join a College team and play competitively.
- **Societies & Social Development** – meet students who share the same interests as you and take a lead in developing student experience.



## Personal & Skills Development

- Careers Guidance
- Creative Writing
- Stretch & Challenge Programme
- Team Gambia
- Volunteering

## Additional Qualifications

- ABC Spanish
- Core Maths
- Extended Project Qualification (EPQ)
- Sports Leadership Award

## Academies & Schools

- Humanities Academy
- Pre-Medical School
- Psychology Research School
- Shakespeare Academy
- Social Science Academy
- Visual Arts Academy

## Performance

- ABRSM Music
- Musical Activities
- Solihull Theatre-in-Education Company (Sol-TIE)

## Sport

- Men's Basketball
- Men's Cricket
- Men's Football
- Women's Football
- Women's Netball
- Men's Rugby
- Sports Leadership Award

## Societies & Social Development

- Bike User Group
- Charity Ambassadors
- Health Ambassadors
- Student Societies (Anime, Gaming, LGBT, Debating and more!)
- Student Council

## Reasons to do an Enrichment...

Enrichment is not compulsory, but it is worthwhile. Here are just some of the reasons why you should do an enrichment:

- **You can earn extra UCAS points for your university application**
- **You will have exciting things to write about in your Personal Statement for Higher Education, Apprenticeship or job applications**
- **You can learn a new skill**
- **You can show you have real commitment to a particular course or career, which will impress future employers or university admissions tutors**
- **You can improve your team-working and leadership skills, as well as your confidence**
- **You can make new friends with similar interests to you**
- **It will be fun**

## How to sign up...

You will need to sign up to the following options at enrolment:

- ABC Spanish
- Core Maths
- Creative Writing
- Extended Project Qualification (EPQ)
- Humanities Academy
- Level 2 Award in Sports Leadership
- Performance Sports (basketball, cricket, football, netball, rugby)
- Pre-Medical School
- Shakespeare Academy
- Social Sciences Academy
- Solihull Theatre-in-Education Company
- Visual Arts Academy

## Careers Guidance

The College is committed to supporting you in your progression onto employment or other training opportunities by helping to develop the skills that you will need. The best candidates for any post or job are able to demonstrate a range of employability skills and experiences and so we strongly encourage



you to undertake a range of enrichment activities and other extra-curricular opportunities during your time at College. This may be in the form of part-time employment, volunteering, work experience or internships. We have forged strong links with employers who offer mock interviews and CV workshops and attend the annual Higher Education & Higher Apprenticeship Fair. Solihull Life Ready – the Careers & Enterprise Company in Solihull – has supported the work of our Careers Guidance team in terms of planning the mentoring links and advice on a range of employers that we work with. We have also developed a proactive and inspiring programme for students seeking apprenticeships or gap year options with dynamic and interactive sessions delivered by employers, with interesting case studies and scenarios such as Grant Thornton; Expeditors; Ernst and Young; KPMG; PwC. We offer a bespoke Employer Network event for students seeking apprenticeships. Students also set up and register their own accounts on the vacancy sites that list vacancies for college leavers.

### How do I access Career Readiness support?

Employability and Careers Coordinators will guide, support and encourage you to undertake a range of activities and opportunities. Local, national and international opportunities will be publicised through the Careers Bulletin on Tyber. Moodle has a wealth of resources and information for you to access. There is a booking system for 1-1 advice in place in the Learning and Resource Centre, Kitson building. You will also receive support through the College's pastoral programme led by your Academic Coach.

One of the main ways to develop employability skills is through A Level or BTEC courses. Your teachers will plan activities that develop core skills such as decision-making, time management, confidence building, effective communication and how to use reflection tools to help you think critically about your own progress. Each curriculum area will offer other opportunities such as attending masterclasses and talks from a range of visiting speakers.

## Creative Writing

**Course description:** This enrichment offers a workshop-style approach to improving and exercising your creative writing talents. You will get excellent tuition in how to write in a variety of genres for a range of audiences and develop skills which make your writing effective. This course is for fun and to allow you to indulge your creativity and develop your writing skills in a supportive group environment. If you would like to write creatively and also gain a qualification, then consider enrolling for a general Extended Project Qualification - please see page 11 for more information on the EPQ.

**Course duration:** September to Easter

**Time commitment:** 1 period per week

**Course costs:** None.

**Who can sign up:** Any student.

**How and when to sign up:** You can apply to join this course at enrolment.



## Stretch & Challenge Programme

Providing extensive support and guidance for students applying to Russell Group universities including Oxford and Cambridge.

**Course description:** The Stretch & Challenge Programme offers:

- preparation for university tests and interviews.
- support with personal statements.
- a place on the Stretch & Challenge Summer School in June.
- extension work opportunities.
- access to Moodle website with links, activities and aptitude tests which will strengthen applications to university.
- a specific programme for those students considering applying to Oxford or Cambridge.

(Students interested in medicine should also ensure they have signed up to the Pre-Medical School).

**Course duration:** March of Year 12 - January of Year 13

**Time commitment:** Attendance at:

1. March launch meeting in year 12 (students with a GCSE score of at least 7.0 will be sent information regarding this via Tyber)
2. Two enrichment sessions during the Spring term
3. Two days Summer School in June of Year 12
4. Meetings as required such as Oxbridge test sessions, personal statement workshops, 1 to 1 meetings.

**Course costs:** None other than optional trips.

**Who can sign up:** There is a recruitment process for the Stretch and Challenge Programme. Usually students will need to have a very good GCSE profile of strong passes and an academic record would contain evidence of:

- unwavering enthusiasm and interest in their subject and other academic pursuits.
- being proactive and independent.
- having the desire to seek out wider reading and research opportunities.
- taking part in some sort of extracurricular activity – this could be the Extended Project Qualification or wider reading or work experience.

**How and when to sign up:**

1. Students with a strong GCSE profile are invited to a meeting in March to address the key commitments of the programme.
2. Interested students then sign up via Moodle in April of Year 12.



## Team Gambia

**Course description:** This project involves a visit to The Gambia in West Africa to complete voluntary work in a primary school in Abuko on the outskirts of Banjul. Students will improve their communication skills, develop confidence and the ability to work successfully as part of a team.



**Course duration:** One week in either November or December 2020.

**Time commitment:** Regular meetings with lead staff in relation to planning for the trip (approximately 10 meetings). In addition, there is a considerable time commitment for fundraising and preparing teaching materials.

**Course costs:** The trip costs approximately £900 per student plus approximately £75 for vaccinations/anti-malaria tablets. In addition, students are expected to fundraise at least £400 each (from January - November) to improve teaching facilities and sanitation at the school and pay teachers' salaries.

**Who can sign up:** Places are available for up to 30 enthusiastic students, who are interested in learning more about life in a developing country. You can register your interest by Tyber messaging Janice Hamilton, Vice Principal.

**How and when to sign up:** Students will be invited to a meeting in January 2020. The 30 places will be allocated on a first come first served basis.



"Team Gambia was the highlight of my time at College, as it provided me with a once in a lifetime opportunity and I made some excellent friends through this unique and insightful experience."

**Student Becky Johnston**

## Volunteering

**Course description:** Individuals who freely give of their own time and energy to help others are always highly regarded. This may take the form of:

- Raising money for a charity
- Working for a charity
- Being a College Health or Charity Ambassador
- Being a mentor to other students or pupils

Taking a leadership role is especially valued, in the scouts, guides or similar organisations. Students completing 100 hours of Service to Others during two years of College will be eligible for College Colours.

**Course duration:** TBC.

**Time commitment:** Depends on the organisation or event.

**Course costs:** Depends on the organisation or event.

**Who can sign up:** All students.

**How and when to sign up:** Students should contact their Academic Coach or a Student Development Officer (SDO).



## ABC Spanish

**Course description:** This is a beginners course (entry level 3 practical languages) in Spanish and, as such, requires no previous study of the language. All four skills are covered in the course: speaking, listening, reading and writing. Tasks are assessed in class; there is no homework.

**Course duration:** September - April

**Time commitment:** 2 periods per week

**Course costs:** There are no costs associated with this course.

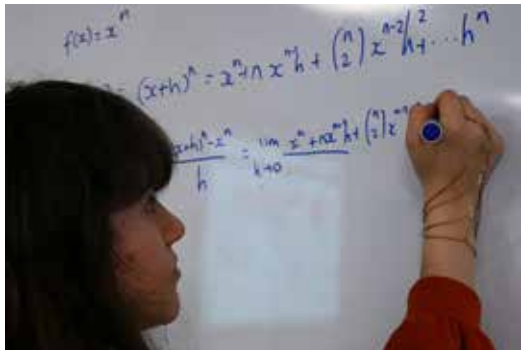
**Who can sign up:** Any student

**How and when to sign up:** You must let staff know at your enrolment interview.



## Core Maths

**Course description:** Core Maths is a Level 3 qualification designed to prepare students for the mathematical demands of study, work and life. It complements a range of numerate A Level courses and it builds on work studied at GCSE. The course is applied in nature and enables students to explore new concepts



and techniques for solving a variety of both theoretical and “real world” problems. Core Maths is ideal for students encountering the more demanding mathematical content of courses such as A Level Psychology, Biology, Chemistry, Geography, Computing, Business and Economics. It would also be useful for students wishing to pursue careers in teaching or healthcare (such as nursing). The qualification is equivalent to an AS Level in terms of UCAS points.

**Course duration:** One year.

**Time commitment:** 3 lessons per week.

**Course costs:** Students will need to purchase a scientific calculator (details at enrolment).

**Who can sign up:** Interested students should have achieved a grade 5 or above at GCSE Mathematics and must not be studying A Level Mathematics or A Level Statistics as one of their 3 (or 4) A Level choices.

**How and when to sign up:** Sign up at enrolment.

## Extended Project Qualification (EPQ)

**Course description:** The EPQ is a piece of independent work of a student's choice, which can either be an artefact or an extended piece of academic writing. The focus is on research and planning skills leading to a final piece. There are a number of specialist routes available including through one of the subject academies. Students are encouraged to be creative and innovative. The work completed cannot be connected to any aspect of their A Level subject. This is assessed at A Level standard and as such an A\* is achievable. Examples of recent projects include making a music video, writing a short story, creating a dance performance, producing an animation, creating a webpage, designing a business. The possibilities are endless!

**Course duration:** September – completed in Year 12

**Time commitment:** 1 lesson per week

**Course costs:** None.

**Who can sign up:** All students.

**How and when to sign up:** When you attend your enrolment interview in August you will be able to add the EPQ to your other subjects.



## Humanities Academy

**Course description:** This is a specialist enrichment activity which supports students interested in applying for a Humanities-related course at university, or employment in a related industry, to deepen and broaden their experience of Humanities by working with national universities. The Academy has links with Salford, Nottingham and Leicester Universities that will support and guide the students projects. The projects will be ideal material for an Extended Project Qualification (EPQ) and students are expected to create an EPQ that will support their career and university progression routes.



**Course duration:** Mid-Autumn term to the end of Year 12

**Time commitment:** Some after College commitment; varies from week to week.

**Course costs:** Possible charges for trips and visits, but this will vary from year to year.

**Who can sign up:** Any student who is studying one but preferably two humanities based subjects, with ambitions to study their Humanities subject/s or a new Humanities area subject such as Philosophy, Archaeology, Anthropology or Egyptology at University.

**How and when to sign up:** Year 12 Humanities students will have the opportunity to complete the Moodle application form in September 2019. There are only 15 places available.

## Pre-Medical School

**Course description:** The Pre-Medical school is an enrichment activity designed to support students who have serious and realistic aspirations to study medicine at university. Through a series of lectures, visits and practical activities, students will strengthen their understanding of the medical profession and develop a greater appreciation of the essential skills and relevant experience required for a successful university application.



Activities undertaken as part of this academy include university masterclasses, visiting speakers, attendance at university lectures and problem-based learning activities. The universities involved have previously included Aston, Birmingham, Keele, Leicester and Liverpool. Places are limited and successful applicants are encouraged to take an Extended Project Qualification (EPQ) in a relevant medically-related field.

**Course duration:** Mid-Autumn term to December of Year 13

**Time commitment:** Includes some after College commitment, which will vary from week to week.

**Course costs:** Occasional transport costs.

**Who can sign up:** High attaining students who have a serious aspiration to apply for a medical degree.

**How and when to sign up:** Membership is assigned via a selection process. Students are asked to express interest towards the end of the first half term. There are only 15 places and it is always oversubscribed.



"I enjoyed the opportunity to take part in the Pre-Medical School and the Stretch & Challenge Summer School. It enabled me to make new friends with the same interests as me, who I hope to remain friends with after College."

**Student Paige Cartwright**

# Psychology Research School

THE UNIVERSITY OF  
**WARWICK**

**Course description:** Psychology students who join this specialist enrichment will have the opportunity to work with the University of Warwick. This opportunity gives students the chance to investigate the science behind Psychology. In the first instance, students will replicate an undergraduate project; then students will develop their own research project. This enrichment leads to an Extended Project Qualification (EPQ), giving students the chance to boost their university application with extra UCAS points.

**Course duration:** July 2019 – April 2020

**Time commitment:** One period per week, and termly visits to the University of Warwick.

**Course costs:** Students are asked to contribute to travel costs to Warwick.

**Who can sign up:** Year 12 / 13 Psychology students.

**How and when to sign up:** Initial interest logged during Year 12, then students are required to write a short essay about Psychology in the news based on specific criteria. This is a competitive process. Year 12 students can sign up during and after enrolment at the start of Year 12.

“The EPQ helped me develop a wide range of skills to use in my degree, including time management and research skills. It’s given me experience of conducting my own research - I feel so much more confident and I know what to expect as I embark on a Psychology degree myself.”

**Student Paul Hicks**



# Shakespeare Academy

**Course description:** This is a specialist enrichment activity open to students on our A level English Literature and English Language courses. Students will benefit from mentoring and seminars with the College's English staff and from experiencing Shakespeare productions at theatres. Students will complete an Extended Project, which could take any form, from an essay to a magazine to a piece of artwork.

**Course duration:** Mid Autumn term to Easter of Year 12.

**Time commitment:** Includes after College commitment, which will vary from week to week.

**Course costs:** Approximately £50 towards the cost of transport and tickets to productions and for the required resources.



"I was part of the Shakespeare Academy which was one of the hardest but most rewarding experiences, especially being exposed to literary academics and so many different universities."

**Student Stevie Elkington**

**Who can sign up:** The Academy is open to all students on our A Level English Literature and English Language courses, who often have ambitions to study English at university. Commitment, passion and determination are necessary to complete the programme and the rewards are very considerable; Universities have been unfailingly impressed with Shakespeare Academy Extended Projects.

**How and when to sign up:** Students on the A Level English Literature and English Language courses can apply in September. There are a maximum of 15 places available.



## Social Sciences Academy



**Course description:** This is an opportunity for A Level Economics, A Level Politics, A Level Sociology and Level Three Diploma Criminology students to examine topical issues at a greater depth than is possible on your course, and to complete an Extended Project in an area of particular interest to you that takes you beyond the specification of your course. If you join this course you will be working in conjunction with members of the Social Sciences team at the College and lecturers from local universities.



**Course duration:** September 2019 to June 2020

**Time commitment:** 1 period a week for the main session and 2 – 4 hours a week of independent study in completing your Extended Project Qualification.

**Course costs:** There may possibly be some local transport costs.

**Who can sign up:** This course is for students intending to study Economics, Politics, Sociology,

Criminology or a related subject at a competitive university.

**How and when to sign up:** You can apply to join this course at enrolment if you have a strong set of GCSE results and would like an additional challenge. Places are limited and there will be a selection process to decide which students can join the group.

## Visual Arts Academy

**Course description:** The Visual Arts Academy is a Qualification Enrichment. Students will gain an EPQ qualification which is assessed at A Level standard and can contribute towards university and employment applications. During the course, students will produce a piece of independent work based on any aspect of the Visual Arts. The focus is on research and planning skills leading to a final piece. Students may choose to work on specialisms such as Architecture, Painting, Ceramics, Textiles, Fashion Design, Photography etc. Students are encouraged to be creative and innovative. The work completed cannot be connected to any aspect of their A Level subjects.



**Course duration:** September – completed in Year 12.

**Time commitment:** 1 lesson per week (1.5hrs) + Independent Study.

**Course costs:** Students will need to pay for costs of sketchbooks, printing and other specialist materials. The Visual Arts department sell most materials needed at a reduced cost.

**Who can sign up:** All Y12 students.

**Case Study 1:** This course is ideal for students aspiring to study **Architecture** at University and are embarking on an academic A Level programme of study. Architecture courses require a portfolio alongside qualifications, so this course will provide the opportunity to meet these requirements. Example programme of study: Mathematics, Physics, History & Visual Arts Academy EPQ.

**Case Study 2:** This course is fantastic for students who have not met the entry requirements for our Visual Arts A Levels. This might be because they have not studied Visual Arts GCSE or have not achieved the required grade in their Visual Arts GCSE. The course would mean embarking on a Visual Arts investigation, developing skills and knowledge in a specialism of choice, alongside any other programme of study.

**Case Study 3:** This course would provide an excellent opportunity to develop work for portfolio that is not covered in the Visual Arts A Levels we offer. For example, a student might be taking A Level Fine Art, but wants to pursue **Fashion Design** at University. Their EPQ could be based around a Fashion Design outcome which could sit alongside the Fine Art work in their portfolio.

**Case Study 4:** This course would be suitable for anyone with an interest in the Visual Arts but for whatever reason isn't taking any of our Visual Arts A Levels. Students could explore a genuine interest and passion in a specialism of their choice, alongside any other programme of study.

**How and when to sign up:** When you attend your enrolment interview in August you will be able to add the Visual Arts Academy EPQ to your other subjects.

## ABRSM Music Theory

**Course description:** This enrichment is part of the A Level Music course and offers additional classes to prepare students for Grade 5 theory and beyond. It is mandatory for music students who have not completed Grade 5 theory.

**Course duration:** September - April

**Time commitment:** 1-2 periods per week.

**Course costs:** None.

**Who can sign up:** This class is mandatory for A Level Music students who have not completed Grade 5 theory, and optional for those who want to study further.

**How and when to sign up:** Speak to Chris Phelps at your first Music lesson.



## Musical Activities

**Course description:** Musical activities vary each year, but typically involve instrumental and vocal groups that all perform in the various concerts that the music department holds throughout the year. Examples include the College Choir, a Soul Band and various chamber music ensembles. All music students must sign up to this, and all take part in Choir every week as part of their course.

**Course duration:** September - April

**Time commitment:** 1-3 periods per week and evening performances.

**Course costs:** None.

**Who can sign up:** Music and non-music students who can play an instrument or sing and can read staff notation.

**How and when to sign up:** Complete the musical enrichment form at induction in September.



## Solihull Theatre-in-Education Company (Sol-TIE)

**Course description:** Interested in gaining real-live experience as an actor-teacher, in the new touring College Theatre-in-Education Company (Sol-TIE)? This enrichment will involve developing performance and facilitation skills, devising performances to a live brief and then touring to perform and conduct workshops in local schools. The experience is just the sort of challenge universities and employers value highly, for budding drama students or teachers alike. You will also develop a range of transferable skills, such as; team work, public speaking, leadership and problem solving.

**Course duration:** October - July.

**Time commitment:** This enrichment will be timetabled during the day with some post-4.00pm rehearsals where necessary.

**Course costs:** None.

**Who can sign up:** The opportunity is best suited to students seeking to progress to competitive HE courses in the Performing Arts and other communication based careers.

**How and when to sign up:** Sign up at enrolment so that your timetable can be arranged accordingly.



## Level 2 Award in Sports Leadership

**Course description:** The Level 2 Award in Sports Leadership will give learners the chance to develop their organisation, motivation and communication skills, whilst also focusing on positive role models in sport, how to mentor others, and how to use leadership skills in a variety of settings. The course requires students to complete 10 hours of voluntary work to demonstrate their leadership. These hours can be completed in or outside of College.

**Course duration:** September - April.

**Time commitment:** 1 period per week.

**Course costs:** None. There are no costs for the actual course, but there may be costs for travel if they are selected for external events.

**Who can sign up:** Anyone looking to work in the sports industry or to work with children. The course is particularly beneficial to A Level PE students interested in becoming teachers or coaches. BTEC Sport students take this enrichment as part of their pathway.

**How and when to sign up:** Please tell your interviewer at enrolment if you wish to join this enrichment.



## Performance Sports Basketball Performance Academy with City of Birmingham Rockets

**Course description:** The College has a basketball team playing in the British Colleges league, as well as other competitions.

**Course duration:** September - April.

**Time commitment:** 6 hours per week including training and matches.

**Course costs:** There may be some potential costs for individual team wear.

**Who can sign up:** Experienced players and anyone showing an interest and commitment to join a College team.

**How and when to sign up:** Trial sessions are held in the week following enrolment. Dates and times are published at this point.



## Performance Sports Men's Cricket

**Course description:** The College has one cricket team, playing Summer British Colleges T20 and Warwickshire Cup matches. The team was T20 champions in 2014.

**Course duration:** April - July.

**Time commitment:** 5+ hours on match days.

**Course costs:** There may be some potential costs for individual team wear.

**Who can sign up:** Male students; previous playing experience would be preferred.

**How and when to sign up:** Trial sessions are held in the week following enrolment. Dates and times are published at this point.



## Performance Sports Men's Football

**Course description:** There are two men's football teams, training twice a week and playing in the British Colleges league. The 2nd Team won their league in 2019.



**Course duration:** August - May.

**Time commitment:** 5+ hours per week including training and matches.

**Course costs:** There may be some potential costs for individual team wear.

**Who can sign up:** Male students; previous playing experience would be preferred.

**How and when to sign up:** Trial sessions are held in the week following enrolment. Dates and times are published at this point.

## Performance Sports Women's Football

**Course description:** The College has a women's football team playing in cup and friendly fixtures against local colleges.

**Course duration:** September - January

**Time commitment:** 1 hour training per week and 3 further hours when games are played.

**Course costs:** There may be some potential costs for individual team wear.

**Who can sign up:** Female students with an interest in the sport.

**How and when to sign up:** Trial sessions are held in the week following enrolment. Dates and times are published at this point.





## Performance Sports Women's Netball

**Course description:** There is one netball team playing in the British Colleges league, as well as local tournaments. The team won their league in 2019.

**Course duration:** September - April  
**Time commitment:** 5+ hours training per week and matches as scheduled.

**Course costs:** There may be some potential costs for individual team wear.

**Who can sign up:** Female students; previous playing experience would be preferred, but anyone showing an interest.

**How and when to sign up:** Trial sessions are held in the week following enrolment. Dates and times are published at this point.



## Performance Sports Men's Rugby with Birmingham Moseley Rugby Club

**Course description:** There is one men's rugby team, playing weekly fixtures and national cup competition.

**Course duration:** August - May.

**Time commitment:** 5+ hours per week including training and matches.

**Course costs:** There may be some potential costs for individual team wear.

**Who can sign up:** Male students; previous playing experience would be preferred, but anyone showing an interest.

**How and when to sign up:** Trial sessions are held in the week following enrolment. Dates and times are published at this point.



## Bike User Group (BUG)



**Course description:** The aims of the group are to encourage students to cycle to College, to promote cycling in general, to encourage the development of facilities to meet the needs of cyclists and to create a forum where students can share their enjoyment of cycling and provide advice and guidance to each other.

**Course duration:** One meeting per term.

**Time commitment:** One morning meeting per term.

**Course costs:** None – just a willingness to give up some of your time.

**Who can sign up:** Students who either cycle to College or who might cycle to College in the future.

**How and when to sign up:** Apply through Tyber to the Student Development Officers in September if you are interested. All students who apply will be invited to the first Bike User Group meeting in the Autumn term.

## Charity Ambassadors

**Course description:** Students are invited to join with other interested students to raise funds for the charities they support. They work as a group to support each other's events.

**Course duration:** September to July each year.

**Time commitment:** Initial meeting to decide together when and how frequently they want to meet. Typically it is bi-weekly and more regularly if there is an event which demands more organisation.

**Course costs:** None – just a willingness to give up some of your time.

**Who can sign up:** Any students interested in charity fundraising.

**How and when to sign up:** Apply through Tyber message to the Student Development Officers in September/October of Year 12.



## Health Ambassadors

**Course description:** Students are invited to join the Health Ambassadors scheme to increase awareness of health issues and engage with health promotion projects to enrich experience and voluntary work.

**Course duration:** September to July of Year 12.

**Time commitment:** Initial meeting to establish possibilities, followed by a weekly commitment for the duration of a project or health promotion, to include training and delivery. Students will be expected to initiate their own health promotion delivery within the College.

**Course costs:** None – just a willingness to give up some of your time.

**Who can sign up:** Students who are interested in health matters, study subjects related to health or plan to study medicine, social work, teaching or other related health care courses at University/ in employment.

**How and when to sign up:** Apply through Tyber message to the Student Development Officers in September/ October of Year 12.



“I loved taking part in the enrichments on offer, including Basketball, Health Ambassadors and taking part in the Student Council meetings.”

**Student Sophy Meah**



# Student Societies

**Course description:** The College is keen to comply with all equality legislation in support of its diverse student body. There are a number of Student interest groups including a Debating Society, Gym club, Anime Manga, Games society and an LGBT



group. Students are encouraged to set up new societies, each year, including faith groups, which reflect their interests and encourage participation.

**Course duration:** Most student-led groups recruit during the first few weeks of each academic year, though students can join at any point, and run all year long, except during exams.

**Time commitment:** It is up to the group members to decide how often they meet, however most groups and societies meet weekly, during lunch time.

**Course costs:** None – just a willingness to give up some of your time.

**Who can sign up:** All students.

**How and when to sign up:** If you are interested in joining an existing group or society or have ideas about setting up a new one, talk to the Student Development Officers based around the refectory and complete a student society set up form.



“I joined LGBT to meet new people who understand me and accept me for who I am. I enjoy the friendly atmosphere and its somewhere I can be open about my thoughts and not feel judged.”

**Student Testimony**

# Student Council

**Course description:** The role of Student Council is to represent student views and to help the College be responsive to the needs of fellow students, making their time here happy and productive.

You can get involved in a number of different ways:

- As a Coaching Representative. To become a Coaching Representative you need to be elected by your coaching group. You will represent the views of your coaching group at student voice events.
- As a member of the Student Council Executive. The Student Council Executive includes Year 12 and Year 13 Executive Officers and any student can go for any of these roles: Vice-Chair (In Year 13 this student will become the Chair), Charities, Events, Publicity and Voice Officers.

Other ways of getting involved outside the Student Council:

- As a Charity Ambassador. Supporting the Charities Officer this role allows you to be involved with the charitable fundraising in College.
- As a Health Ambassador. Here you can help to support local and national health promotion campaigns within the College.

## **Course duration:**

- Coaching Reps are elected for a one year term of office.
- Year 12 Student Council Executive members are elected in November and remain in post until April of Year 13. To be eligible to stand, you must be able to demonstrate exemplary behaviour and a commitment to your studies through excellent attendance, punctuality and effort.

## **Time commitment:**

- Coaching Reps attend 3 Student Council Meetings a year.
- Executive members have a much bigger time commitment and meet every week. The Year 13 Chair and Year 12 Vice-Chair also become Student Governors and attend the College's Local Governing Body meetings after the college day.

**Course Costs:** None – just a willingness to give up some of your time.

**Who can sign up:** All students.

**How and when to sign up:** Your Academic Coach can tell you about the Coach Representative. Look out for details about the Student Council Executive elections on Tyber and on social media. Contact the Student Development Officers when you start College if you want to know more.

# Find us on social media



[facebook.com/solihullsixthform](https://facebook.com/solihullsixthform)



[twitter.com/sfcsapply](https://twitter.com/sfcsapply)



[instagram.com/sfcsolihull](https://instagram.com/sfcsolihull)



[youtube.com/TheSixthFormCollegeSolihull](https://youtube.com/TheSixthFormCollegeSolihull)

Visit the website  
[www.solihullafc.ac.uk](http://www.solihullafc.ac.uk)